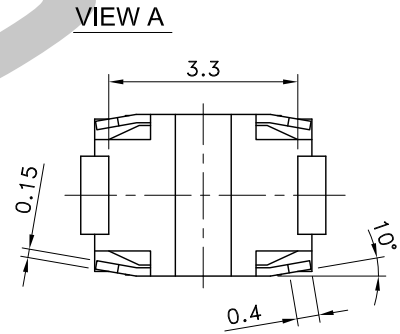
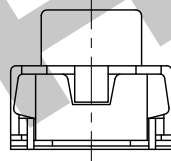
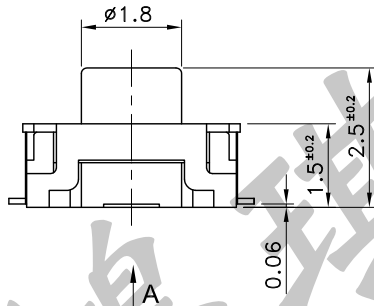
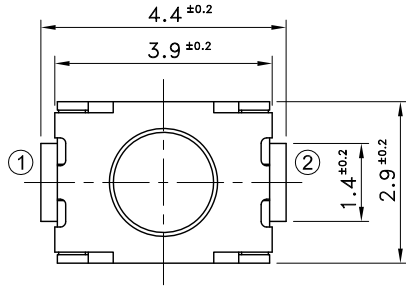
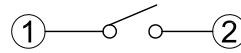
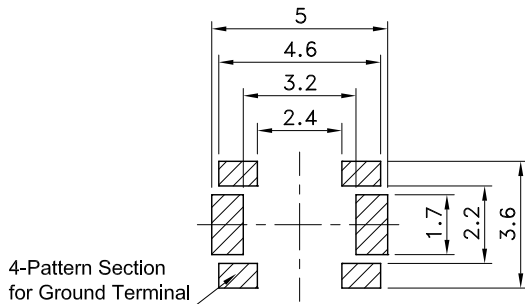


Part No.	Operating Force	Stem Color	Return Force
STS-227	100±50gf	Black	10gf Min.
STS-227-A	160 ⁺⁷⁰ ₋₄₀ gf	Gray	50gf Min.



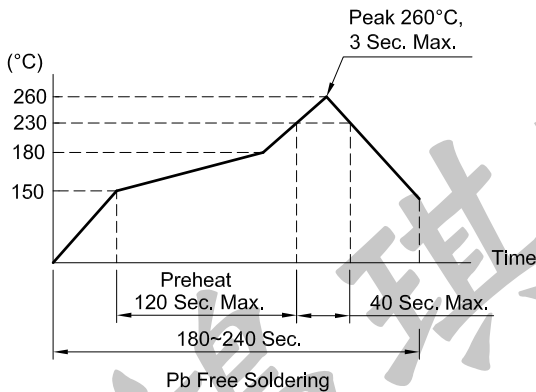
P.C.B TERMINAL POSITION

CIRCUIT ARRANGEMENT



SOLDERING CONDITIONS

SPECIFICATIONS



1. Rating : DC 12V 50mA
2. Contact Resistance : 100mΩ Max.
3. Insulation Resistance : 100MΩ Min. at DC 100V
4. Dielectric Strength : AC 250V for 1 Minute
5. Stroke : 0.2±0.1 mm
6. Life : 100,000 Cycles
7. Package : 2,000 Pcs/Reel
8. Operating Temperature Range : -20~+70°C
9. Storage Temperature Range : -30~+80°C

REVISION:		DATE:		REVISION:		DATE:	
UNIT:mm		THIRD ANGLE PROJECTION METHOD		TOL. UNLESS OTHERWISE STATED:±0.3		CODE NO.: HCH-2592	
ISSUED		CONFIRMED		HCH [®] ISO9001 Certified ISO14001 Certified HORNG CHIH 鴻琪股份有限公司		PART NO. STS-227	
<i>John</i> 2025.10.15		<i>Elvis</i> 2025.10.15					