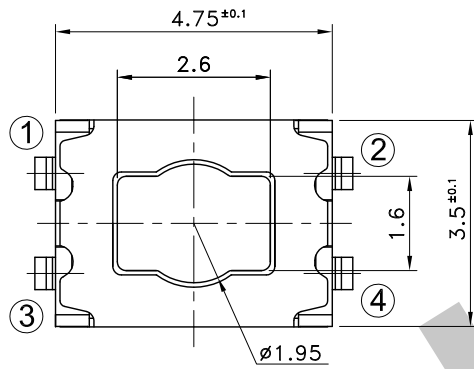
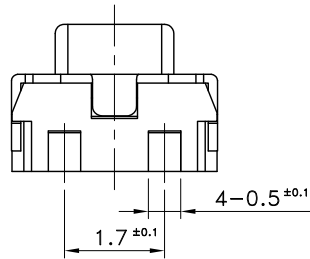
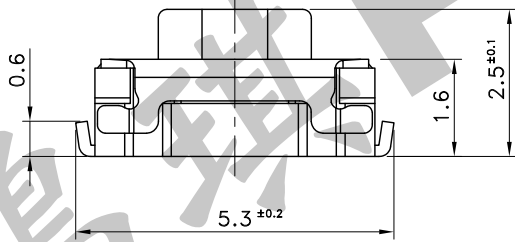


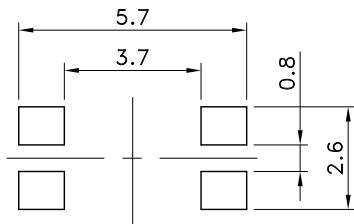
Part No.	Operating Force	Life	Stem Color
STS-215-A	180±50 gf	100,000 Cycles	Black
STS-215-B	260±50 gf	100,000 Cycles	Red
STS-215-E	500±100 gf	200,000 Cycles	Natural (White)



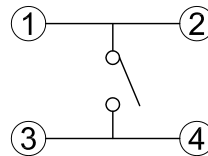
No.	Parts	Material
6	Cover	Stainless Steel
5	Contact	Stainless Steel
4	Terminal	Phosphor Bronze
3	Case	LCP
2	Stem	LCP
1	PI Film	PI



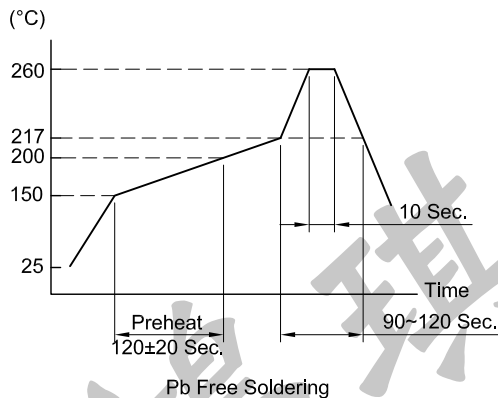
P.C.B TERMINAL POSITION



CIRCUIT ARRANGEMENT



SOLDERING CONDITIONS



SPECIFICATIONS

1. Rating : DC 12V 50mA
2. Contact Resistance : 100mΩ Max.
3. Insulation Resistance : 100MΩ Min. at DC 100V
4. Dielectric strength : AC 250V for 1 Minute
5. Stroke : 0.18±0.1mm
6. Package : 3,000 Pcs/Reel
7. Operating Temperature Range : -40~+105°C
8. Storage Temperature Range : -40~+105°C
9. Manual soldering : Tip Temperature 350±5°C
Soldering Time 5 Sec.

REVISION:		DATE:		REVISION:		DATE:	
UNIT:mm		THIRD ANGLE PROJECTION METHOD		TOL. UNLESS OTHERWISE STATED:±0.2		CODE NO.: HCH-2393-2	
ISSUED		CONFIRMED		HCH ISO9001 Certified ISO14001 Certified HORNG CHIH 鴻琪股份有限公司		PART NO. STS-215	
<i>John</i> 2024.11.12		<i>Elvis</i> 2024.11.12					