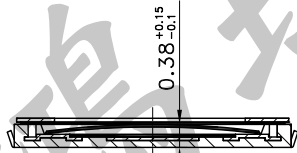
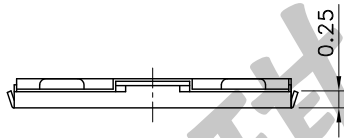
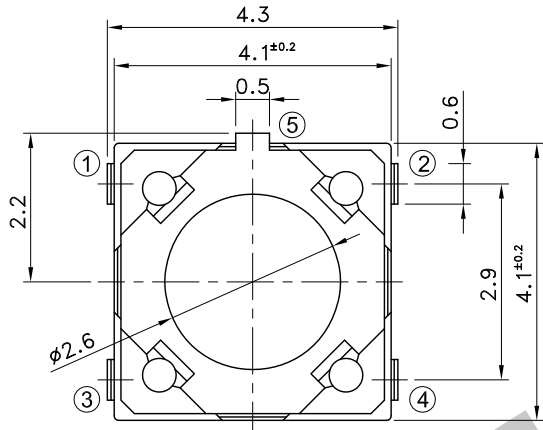
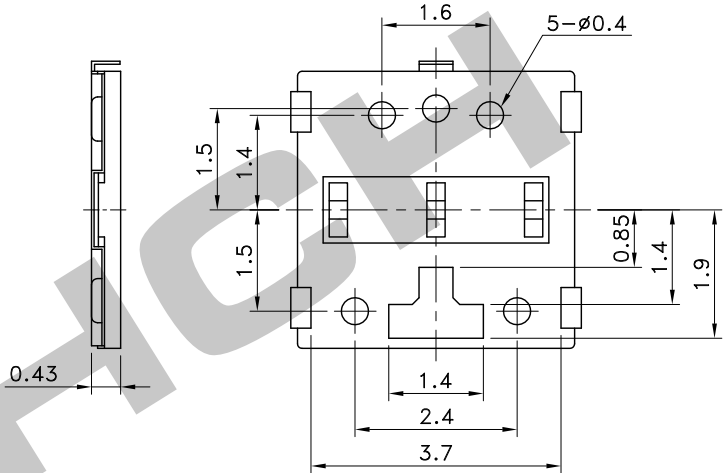


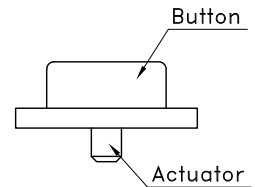
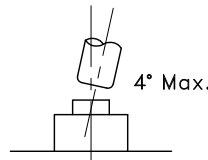
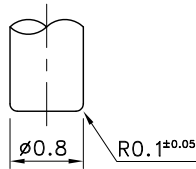
Part No.	Operating Force	Stroke	Life
STS-212	100±50gf	0.15±0.1mm	1,000,000 Cycles
STS-212-A	160±50gf	0.2±0.1mm	1,000,000 Cycles
STS-212-B	240±60gf	0.2±0.1mm	500,000 Cycles



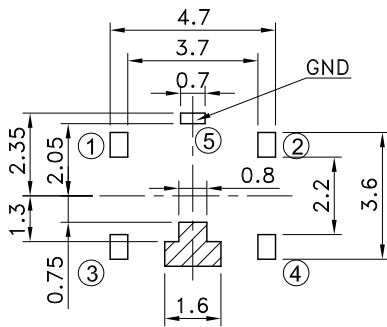
Operating Position



Recommend use cap shape dimension

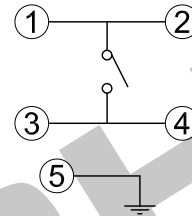


P.C.B TERMINAL POSITION

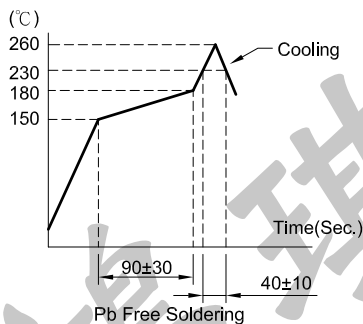


- Part of ③ - ④ terminal is exposed at ▨ area.
- Any land pattern or vias shall not be provided at ▨ area.

CIRCUIT ARRANGEMENT



SOLDERING CONDITIONS



SPECIFICATIONS

1. Rating : DC2V 10µA~DC 15V 20mA
2. Contact Resistance : 500mΩ Max.
3. Insulation Resistance : 50MΩ Min. at DC 100V
4. Dielectric strength : AC 100V for 1 Minute
5. Taping Package : 10,000 Pcs/Reel
6. Operating Temperature Range : -20~+70°C
7. Storage Temperature Range : -40~+85°C (Bulk)
-20~+60°C (Taping)
8. Reflow Soldering Profile : According Reflow Profile
Max. 3 Times

REVISION:	DATE:	REVISION:	DATE:
-----------	-------	-----------	-------

UNIT:mm	THIRD ANGLE PROJECTION METHOD	TOL. UNLESS OTHERWISE STATED:±0.1	CODE NO.: HCH-1457
---------	-------------------------------	-----------------------------------	--------------------

ISSUED	CONFIRMED	HCH ISO9001 Certified ISO14001 Certified HORNG CHIH 鴻琪股份有限公司	PART NO.
John	Elvis		STS-212
2009.02.12	2009.02.12		