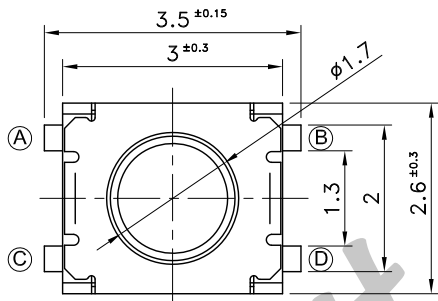
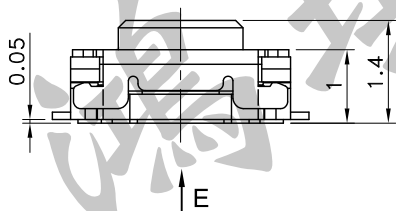
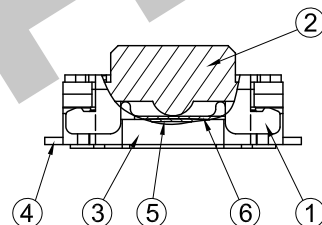
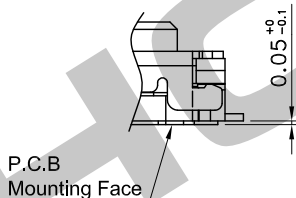


6	Mylar	Polyimide	1		
5	Contact Plate	Stainless Steel Plate	2	Ag Plating	
4	Terminal	Copper Alloy	4	Ag Plating Over Ni Plating	
3	Frame	Liquid Crystal Polymer	1		Black
2	Stem	Liquid Crystal Polymer	1		Black
1	Cover	Stainless Steel Plate	1		
No.	Parts	Material	Q'ty	Finish	Remarks

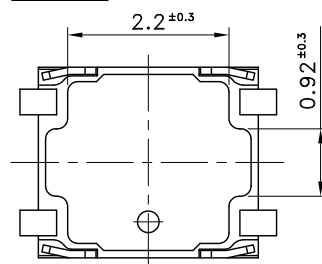
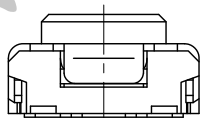
Part No.	Operating Force	Life
STS-211-A	160±50 gf	500,000 Cycles
STS-211-D	450±80 gf	200,000 Cycles



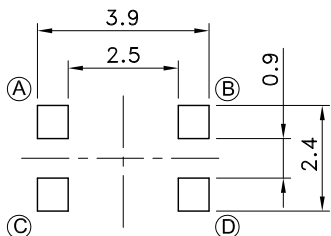
TERMINALS DETAIL



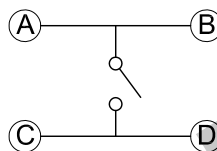
VIEW E



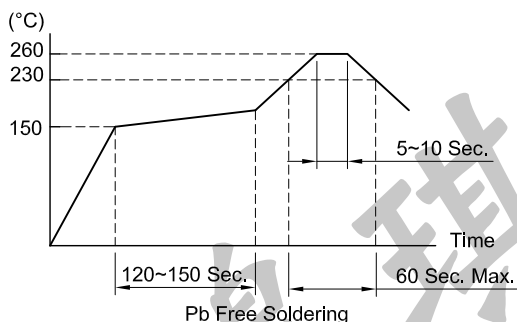
P.C.B TERMINAL POSITION



CIRCUIT ARRANGEMENT



SOLDERING CONDITIONS



SPECIFICATIONS

- 1. Rating : DC 12V 50mA
- 2. Contact Resistance : 100mΩ Max.
- 3. Insulation Resistance : 100MΩ Min. at DC 500V
- 4. Dielectric Strength : AC 250V for 1 Minute
- 5. Stroke : 0.15±0.1mm
- 6. Package : 9,500 Pcs/Reel
- 7. Operating Temperature Range : -40~+85°C
- 8. Storage Temperature Range : -40~+85°C
- 9. Reflow Soldering Profile : According Reflow Profile Max. 2 Times
- 10. Manual soldering : Tip Temperature 350°C Max. Soldering Time 3 Sec. Max.

REVISION: _____ DATE: _____ REVISION: _____ DATE: _____

UNIT:mm THIRD ANGLE PROJECTION METHOD TOL. UNLESS OTHERWISE STATED:±0.1 CODE NO.:HCH-2310

ISSUED	CONFIRMED	HCH ISO9001 Certified ISO14001 Certified HORNG CHIH 鴻琪股份有限公司	PART NO.
John	Elvis		STS-211
2019.12.24	2019.12.24		