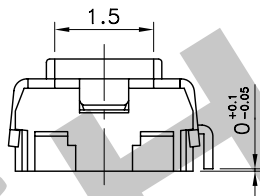
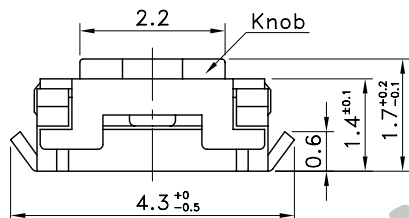
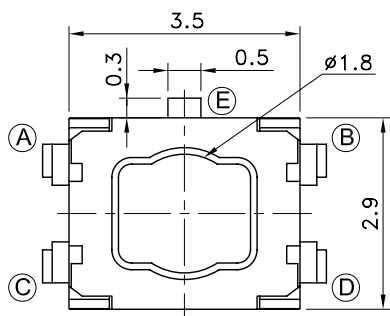
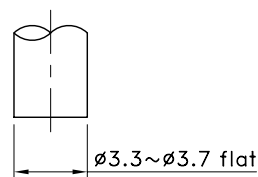
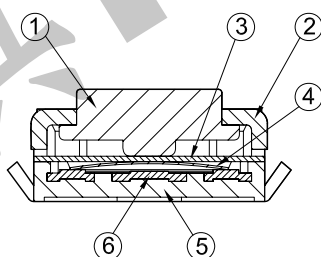
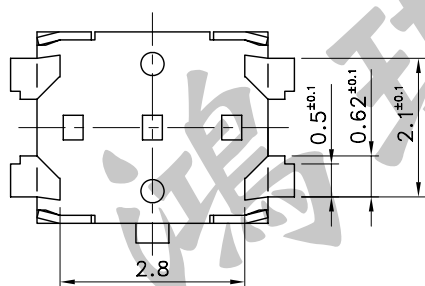


6	Fixed Contact Terminal	Brass	Ag Plate
5	Mount	PPA / Liquid Crystal Polymer	
4	Movable Contact	Stainless Steel	One Side Ag Plate
3	Film	Teflon	
2	Cover Plate	Stainless Steel	
1	Push Plate	PPA / Liquid Crystal Polymer	
No.	Parts	Materials	Finish

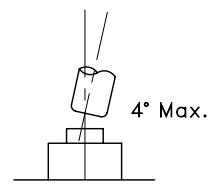
Part No.	Operating Force	Life
STS-150	100±50gf	1,000,000 Cycles
STS-150-A	160±50gf	200,000 Cycles
STS-150-B	240±50gf	200,000 Cycles
STS-150-C	350±100gf	200,000 Cycles
STS-150-E	500±150gf	100,000 Cycles



Recommended key top:
Design key top as No.-1. Design inclination of key top 4 deg. max. as No.-2.
Tolerance between switch and key top is within 0.3mm.

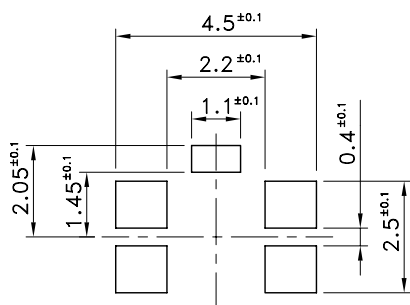


No.-1

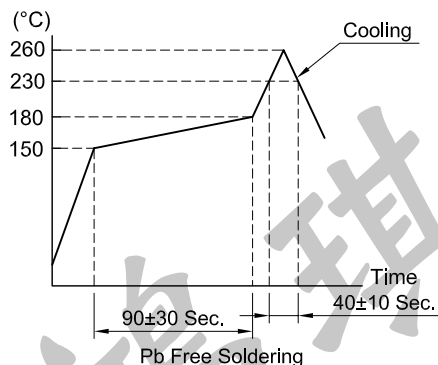


No.-2

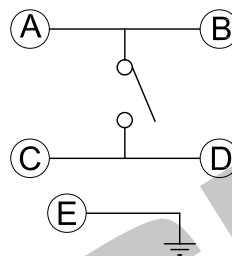
P.C.B TERMINAL POSITION



REFLOW SOLDERING CONDITIONS



CIRCUIT ARRANGEMENT



SPECIFICATIONS

- Rating : DC 15V 20mA Max.
DC 2V 10µA Min.
- Contact Resistance : 100mΩ Max.
- Insulation Resistance : 100MΩ Min. at DC 100V
- Dielectric strength : AC 250V for 1 Minute
- Stroke : 0.15±0.1 mm
- Taping Package : 5,000 Pcs/Reel
- Operating Temperature Range : -40~+85°C
- Storage Temperature Range : -40~+85°C (Bulk)
:-20~+60°C (Taping)

REVISION: _____ DATE: _____ REVISION: _____ DATE: _____

UNIT:mm THIRD ANGLE PROJECTION METHOD TOL. UNLESS OTHERWISE STATED:±0.2 CODE NO.:HCH-1599

ISSUED	CONFIRMED	HCH ISO9001 Certified ISO14001 Certified HORNG CHIH 鴻琪股份有限公司	PART NO.
John	Elvis		STS-150
2012.04.24	2012.04.24		