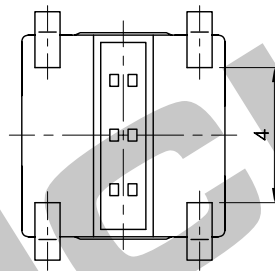
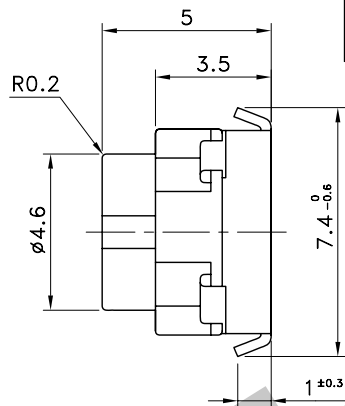
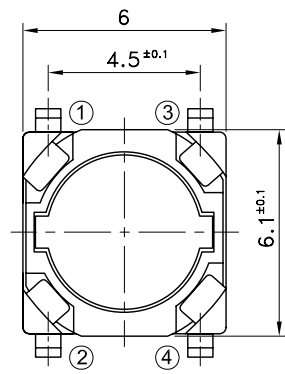
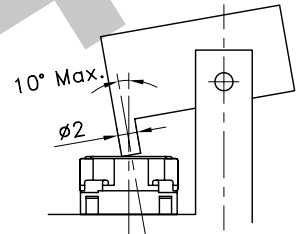


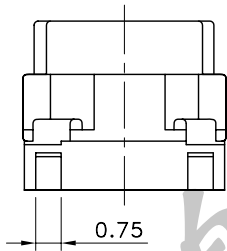
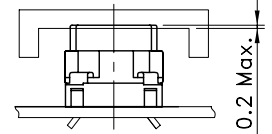
Part No.	Operating Force	Stroke	Life
STS-142-A	220±60gf	1.0±0.2mm	100,000 Cycles
STS-142-B	250±60gf	1.0±0.2mm	100,000 Cycles
STS-143-A	200±60gf	1.3±0.2mm	100,000 Cycles
STS-143-B	250±60gf	1.3±0.2mm	100,000 Cycles
STS-143-C	350±100gf	1.3±0.2mm	30,000 Cycles



Design inclination of key top 10° max.

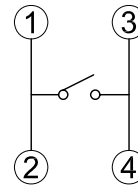
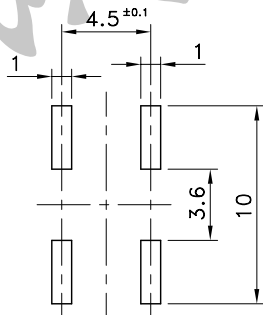


Initial Push Amount of Switch



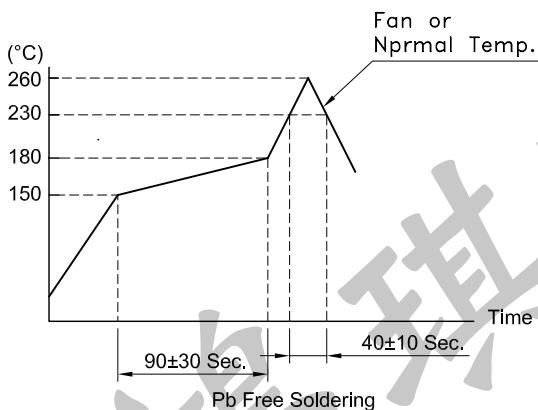
P.C.B TERMINAL POSITION

CIRCUIT ARRANGEMENT



SOLDERING CONDITIONS

SPECIFICATIONS



1. Rating : DC2V 10μA ~ DC 12V 50mA
2. Contact Resistance : 100mΩ Max.
3. Insulation Resistance : 100MΩ Min. at DC 100V
4. Dielectric strength : AC 250V for 1 Minute
5. Package : 2,000 Pcs/Reel
6. Operating Temperature Range : -40~+85°C
7. Storage Temperature Range : -40~+85°C (Bulk)
: -20~+60°C (Taping)

REVISION:		DATE:		REVISION:		DATE:	
UNIT:mm		THIRD ANGLE PROJECTION METHOD		TOL. UNLESS OTHERWISE STATED:±0.2		CODE NO.: HCH-1931	
ISSUED		CONFIRMED		PART NO.		STS-142	
John		Elvis		HCH® HORNG CHIH		STS-143	
2014.01.17		2014.01.17		ISO9001 Certified ISO14001 Certified 鴻琪股份有限公司			