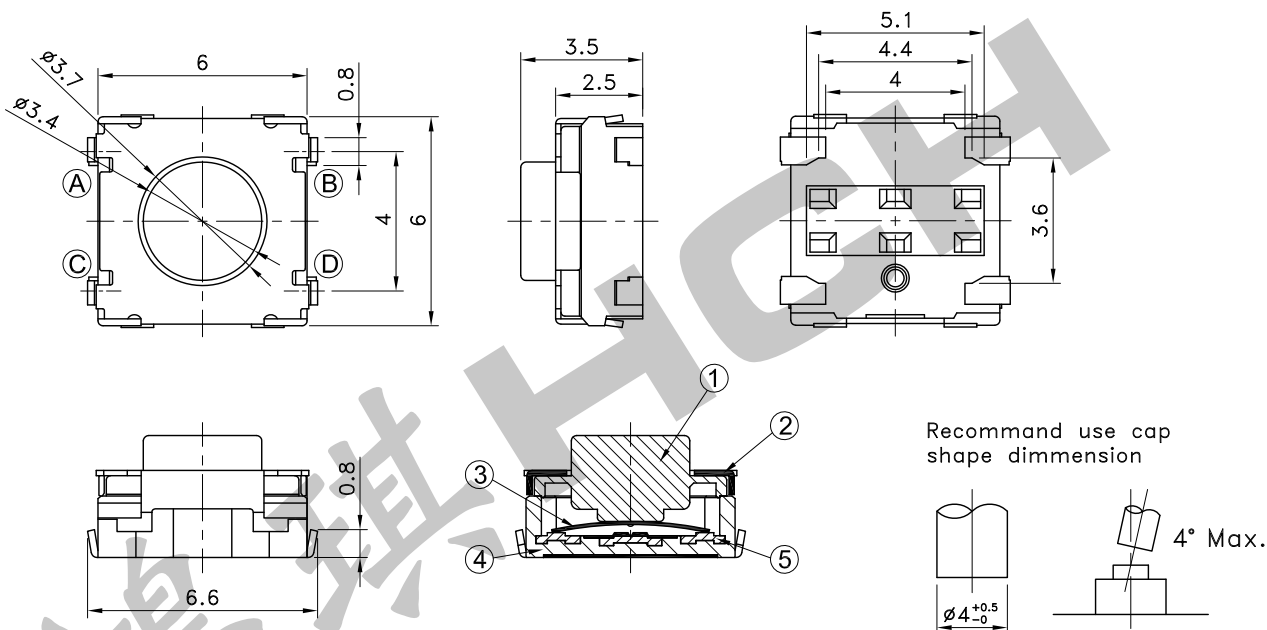
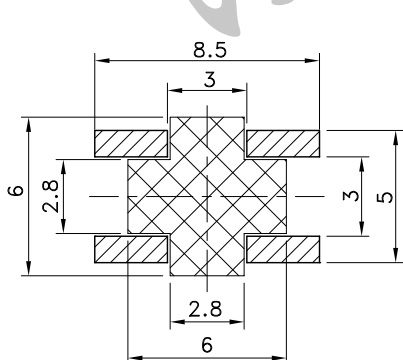


5	Immovable Contactor	Brass Plate	Silver Plating
4	Mounting Base	Polyphthalamide	
3	Movable Contactor	Cold Rolled Stainless Steel Strip for Springs	One Side Silver Plating
2	Cover	Stainless Steel	
1	Push Plate	Silicon Rubber	
No.	Parts	Material	Finish

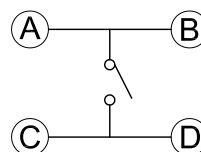


P.C.B TERMINAL POSITION

CIRCUIT ARRANGEMENT

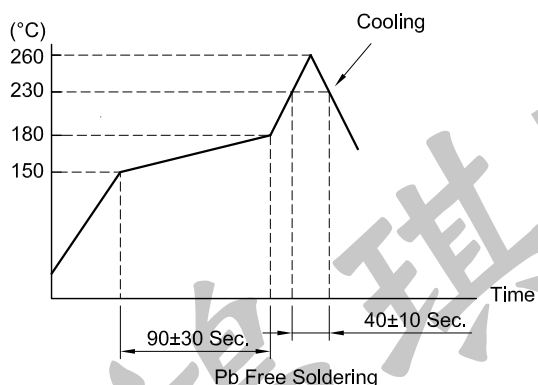


- ▨ : Recommended land pattern area.
- ▩ : No soldering area.
- Any land pattern or via holes shall not be provided at ▩ area.
- If it's necessary to design land pattern or via holes at ▩ area, please apply resist to them to protect their metal part completely.
- If their metal parts are not protected completely, short circuit failure may occur by solder ball.
- Beside, there should be convexoconcave by designing additional pattern, it may cause with tilt, influence on solder-ability or flux intrusion after reflow soldering.
- Therefore, please study any influence of additional land pattern or via holes at ▩ area in advance.



SOLDERING CONDITIONS

SPECIFICATIONS



1. Rating : DC 2V 10 μ A ~ DC 15V 20mA
2. Contact Resistance : 500m Ω Max.
3. Insulation Resistance : 100M Ω Min. at DC 100V
4. Dielectric Strength : AC 250V for 1 Minute
5. Operating Force : 200 \pm 60gf
6. Stroke : 0.25 \pm 0.15mm
7. Life : 1,000,000 Cycles
8. Package : 3,000 Pcs/Reel
9. Operating Temperature Range : -40~+85 $^{\circ}$ C
10. Storage Temperature Range : -40~+85 $^{\circ}$ C (Bulk)
-20~+60 $^{\circ}$ C (Taping)
11. Reflow Soldering Profile : According Reflow Profile
Max. 2 Times

REVISION:		DATE:		REVISION:		DATE:	
UNIT:mm		THIRD ANGLE PROJECTION METHOD		TOL. UNLESS OTHERWISE STATED: \pm 0.2		CODE NO.:HCH-2088	
ISSUED		CONFIRMED		PART NO.			
<i>John</i>		<i>Elvis</i>		HCH ISO9001 Certified ISO14001 Certified HORNG CHIH 鴻琪股份有限公司		STS-128	
2017.01.26		2017.01.26					