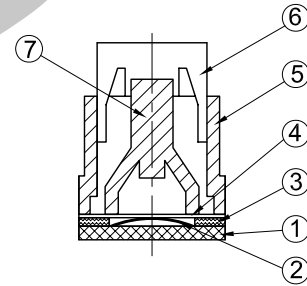
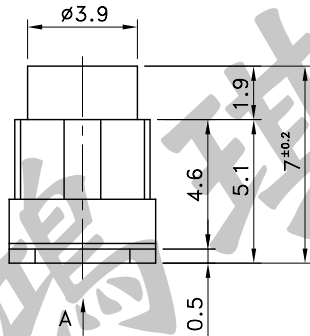
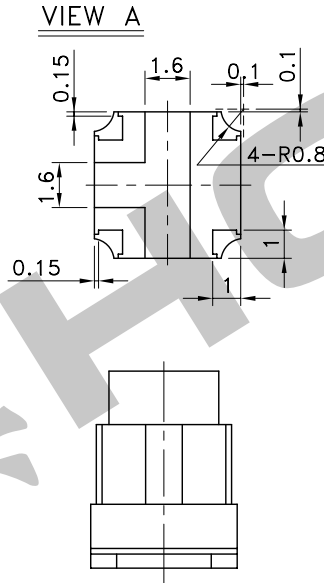
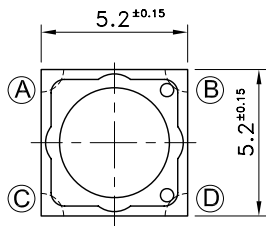
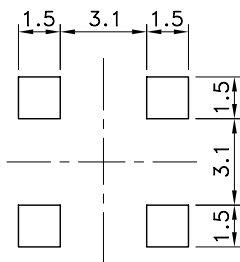


|     |                  |                                |                     |               |
|-----|------------------|--------------------------------|---------------------|---------------|
| 7   | Lever            | Silicon                        |                     |               |
| 6   | Plunger          | Polyphthalamide                |                     | 94HB, White   |
| 5   | Case             | Polyphthalamide                |                     | 94HB, White   |
| 4   | Waterproof Sheet | Heat-resistant Polyimide Sheet |                     | 94V-0, Yellow |
| 3   | Adhesive Sheet   | Heat-resistant Polyimide Resin |                     | 94V-0, Yellow |
| 2   | Tact Spring      | Phosphor Bronze                | One Side Ag Plating |               |
| 1   | Circuit Board    | Bakelite                       | Au Palating         | 94V-0         |
| No. | Parts            | Material                       | Finish              | Remarks       |

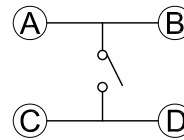
| Part No.  | Force     |
|-----------|-----------|
| STS-120-B | 220±60gf  |
| STS-120-C | 370±100gf |



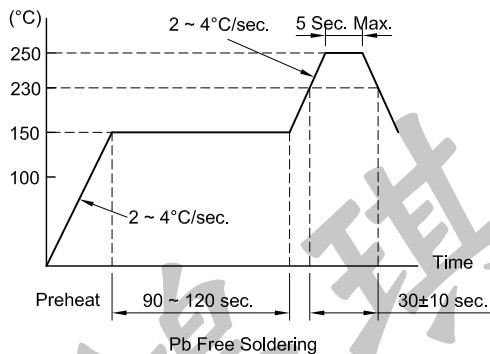
### P.C.B TERMINAL POSITION



### CIRCUIT ARRANGEMENT



### SOLDERING CONDITIONS



### SPECIFICATIONS

- Rating : DC 12V 20mA
- Contact Resistance : 100mΩ Max.
- Insulation Resistance : 100MΩ Min. at DC 100V
- Dielectric strength : AC 250V for 1 Minute
- Stroke : 1.5±0.2mm
- Life : 50,000 Cycles
- Taping package : 1,000 Pcs/Reel
- Operation Temperature Range : -30~+80°C
- Storage Temperature Range : -40~+90°C
- Manual soldering : Tip Temperature 350°C Max.  
Soldering Time 3 Sec. Max.

REVISION: \_\_\_\_\_ DATE: \_\_\_\_\_ REVISION: \_\_\_\_\_ DATE: \_\_\_\_\_

UNIT:mm THIRD ANGLE PROJECTION METHOD TOL. UNLESS OTHERWISE STATED:±0.3 CODE NO.:HCH-1491

|                           |                            |  |                |
|---------------------------|----------------------------|--|----------------|
| ISSUED                    | CONFIRMED                  | <b>HCH</b> ®<br>ISO9001 Certified<br>ISO14001 Certified<br><b>HORNG CHIH</b><br>鴻琪股份有限公司 | PART NO.       |
| <i>John</i><br>2009.04.21 | <i>Elvis</i><br>2009.04.21 |  | <b>STS-120</b> |