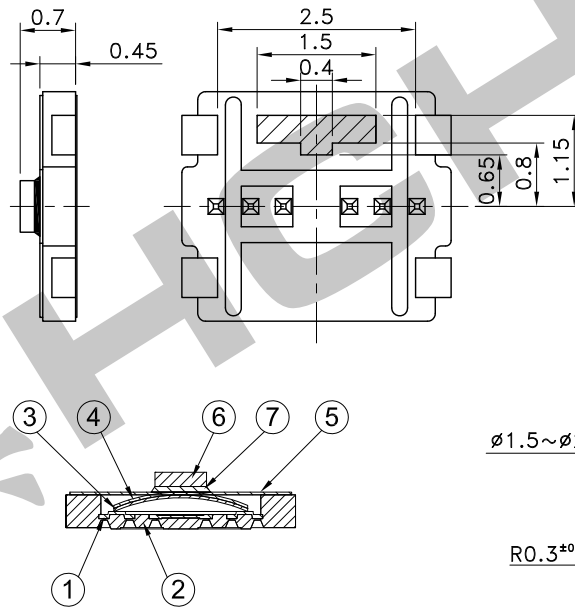
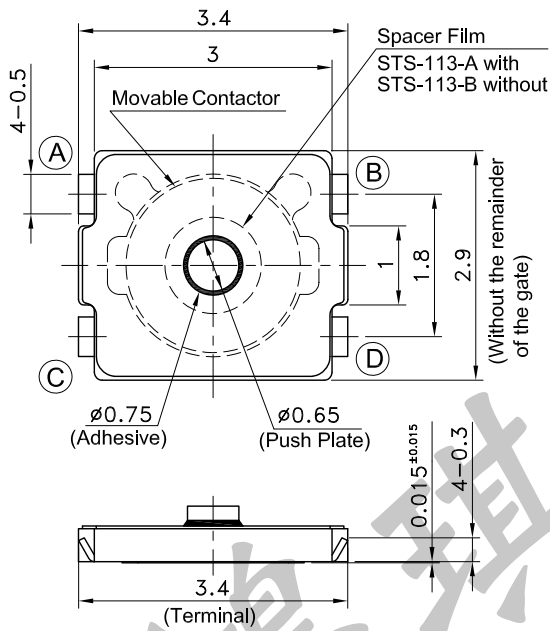
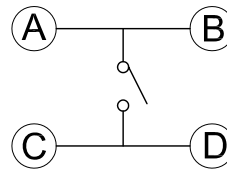
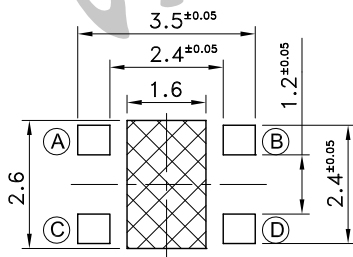


| | | | |
|-----|---------------------|-----------------|-------------------------|
| 7 | Adhesive | Epoxy Resin | |
| 6 | Push Plate | Polyimide | |
| 5 | Film | Polyimide | |
| 4 | Movable Contactor 2 | Stainless Steel | |
| 3 | Movable Contactor 1 | Stainless Steel | One Side Silver Plating |
| 2 | Mounting Base | Polyimide | |
| 1 | Immovable Contactor | Phosphor Bronze | Silver Plating |
| No. | Parts | Material | Finish |



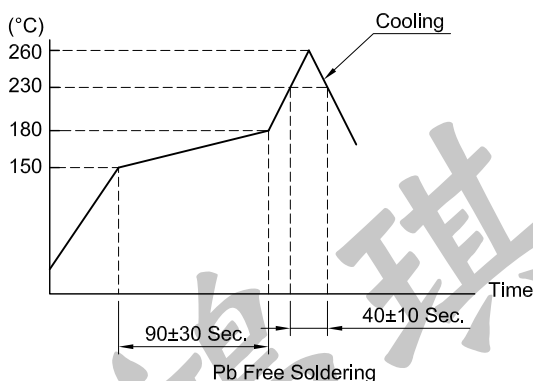
P.C.B TERMINAL POSITION

CIRCUIT ARRANGEMENT



Part of (A) - (B) terminal is exposed at area.
Any land pattern or vias shall not be provided at area.

SOLDERING CONDITIONS



SPECIFICATIONS

- Rating : DC2V 10 μ A ~ DC15V 20mA
- Contact Resistance : 500m Ω Max.
- Insulation Resistance : 50M Ω Min. at DC 100V
- Dielectric strength : AC 250V for 1 Minute
- Operating Force : STS-113-A: 160±50 gf
STS-113-B: 240±70 gf
- Stroke : 0.15±0.1 mm
- Life : 500,000 Cycles
- Package : 8,000 Pcs/Reel
- Operating Temperature Range : -40~+85°C
- Storage Temperature Range : -40~+85°C (Bulk)
-20~+60°C (Taping)
- Reflow soldering : According Reflow Profile
Max. 2 Times. Re-soldering by soldering iron shall be allowed under 350°C max. 3 sec. max.

| | | | |
|-------------|-------------------------------|--|---------------------|
| REVISION: | DATE: | REVISION: | DATE: |
| UNIT:mm | THIRD ANGLE PROJECTION METHOD | TOL. UNLESS OTHERWISE STATED:±0.1 | CODE NO.:HCH-2043-1 |
| ISSUED | CONFIRMED | PART NO. | |
| <i>John</i> | <i>Elvis</i> | STONG CHIH | |
| 2017.02.10 | 2017.02.10 | HCH® 鴻琪股份有限公司 ISO9001 Certified ISO14001 Certified | |
| | | STONG-113 | |