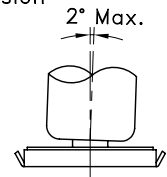
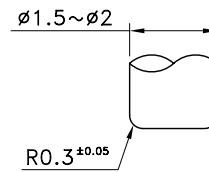
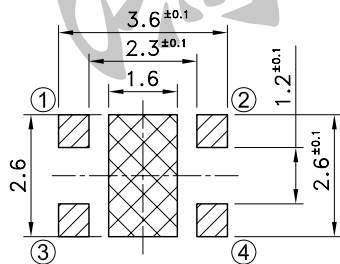


Recommend use cap shape dimension

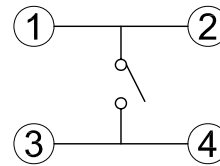


P.C.B TERMINAL POSITION

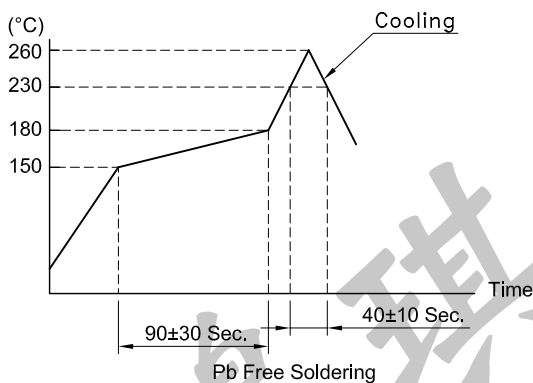


Part of ③ - ④ terminal is exposed at area.
Any land pattern or vias shall not be provided at area.

CIRCUIT ARRANGEMENT



SOLDERING CONDITIONS



SPECIFICATIONS

1. Rating : DC15V 20mA (Max.)
: DC2V 10 μ A (Min.)
2. Contact Resistance : 500m Ω Max.
3. Insulation Resistance : 50M Ω Min. at DC 100V
4. Dielectric strength : AC 250V for 1 Minute
5. Operating Force : 160 \pm 50gf
6. Stroke : 0.15 \pm 0.1mm
7. Life : 100,000 Cycles
8. Package : 8,000 Pcs/Reel
9. Operating Temperature Range : -40~+85°C
10. Reflow soldering : According Reflow Profile
Max. 2 Times. Re-soldering by soldering iron shall be allowed under 280°C max. 3 sec.

REVISION:		DATE:		REVISION:		DATE:	
UNIT:mm		THIRD ANGLE PROJECTION METHOD		TOL. UNLESS OTHERWISE STATED: ± 0.3		CODE NO.:HCH-1227-2	
ISSUED		CONFIRMED		HCH HORNG CHIH ISO9001 Certified 鴻琪股份有限公司 ISO14001 Certified		PART NO. STS-100	
John		Elvis					
2013.10.21		2013.10.21					