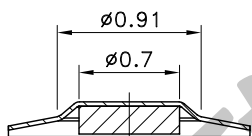
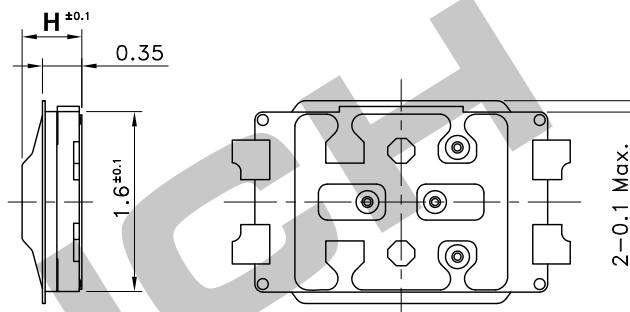
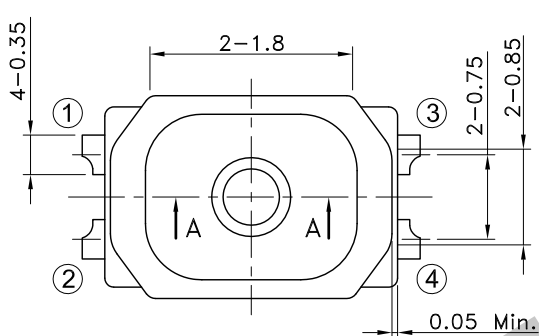
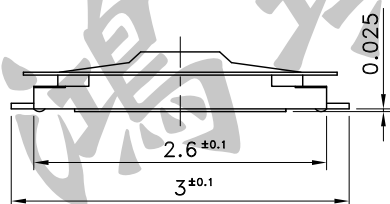


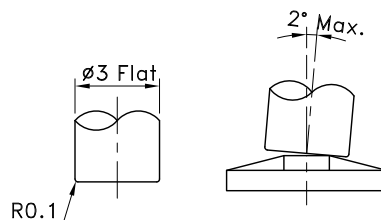
| Part No. | Height | Operating Force | Stroke | Life |
|-----------|----------|-----------------|-------------|----------------|
| STS-092 | H=0.5mm | 70±40gf | 0.08±0.05mm | 200,000 Cycles |
| STS-092-A | H=0.5mm | 100±50gf | 0.08±0.05mm | 500,000 Cycles |
| STS-092-B | H=0.53mm | 160±50gf | 0.11±0.05mm | 500,000 Cycles |
| STS-092-C | H=0.55mm | 240±60gf | 0.11±0.05mm | 500,000 Cycles |



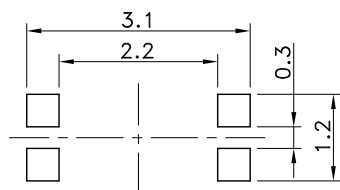
SECT A-A



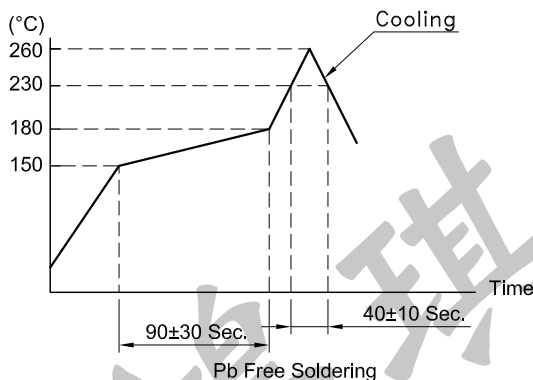
Recommend use cap shape dimension



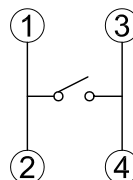
P.C.B TERMINAL POSITION



SOLDERING CONDITIONS



CIRCUIT ARRANGEMENT



SPECIFICATIONS

- Rating : DC 15V 20mA Max.
DC 2V 10µA Min.
- Contact Resistance : 500mΩ Max.
- Insulation Resistance : 50MΩ Min. at DC 100V
- Dielectric Strength : AC 250V for 1 Minute
- Taping : 10,000 Pcs/Reel
- Operating Temperature Range : -40~+85°C
- Storage Temperature Range : -40~+85°C (Bulk)
-20~+60°C (Taping)
- Reflow Soldering Profile : According Reflow Profile
Max. 2 Times
- Manual soldering : Tip Temperature 350°C Max.
Soldering Time 3 Sec. Max.

| | | | |
|-------------|-------------------------------|------------------------------------|---------------------|
| REVISION: | DATE: | REVISION: | DATE: |
| UNIT:mm | THIRD ANGLE PROJECTION METHOD | TOL. UNLESS OTHERWISE STATED:±0.05 | CODE NO.:HCH-1996-1 |
| ISSUED | CONFIRMED | PART NO. | |
| <i>John</i> | <i>Elvis</i> | HORNG CHIH | |
| 2021.03.12 | 2021.03.12 | 鴻琪股份有限公司 | |
| | | STS-092 | |