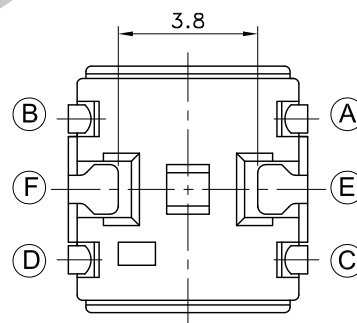
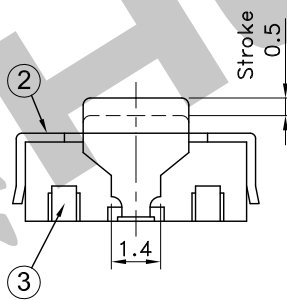
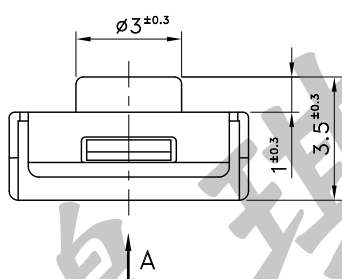
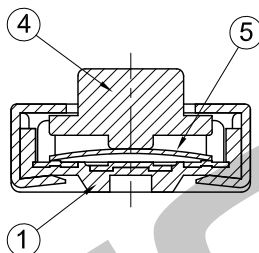
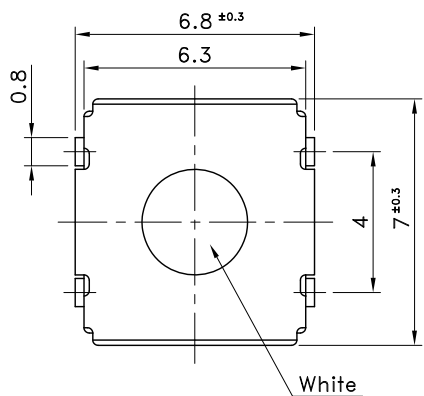
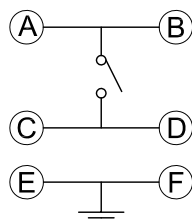
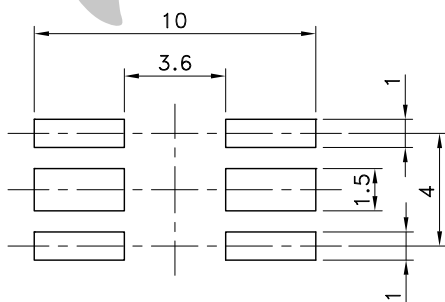


5	Movable Contact	Stainless Steel	Solder Plate	
4	Button	Polyamide Resin		94V-0
3	Terminal	Brass	Silver Plate	
2	Frame	Stainless Steel		
1	Base	Polyamide Resin		94V-0, Black
No.	Parts	Material	Finish	Remarks



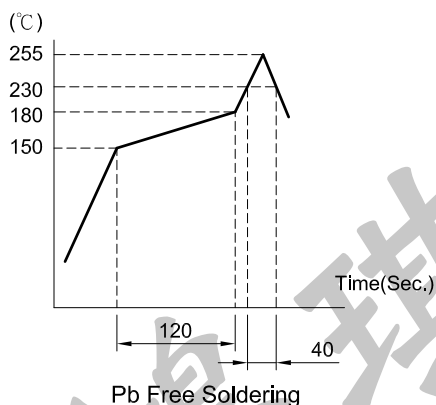
P.C.B TERMINAL POSITION

CIRCUIT ARRANGEMENT



SOLDERING CONDITIONS

SPECIFICATIONS



- Rating : DC 24V 30mA Max.  
DC 5V 1mA Min.
- Contact Resistance : 100mΩ Max. at AC 200μV 1.5mA
- Insulation Resistance : 100MΩ Min. at DC 100V
- Dielectric strength : AC 250V for 1 Minute
- Operating Force : 200±100gf
- Stroke : 0.5mm
- Life : 100,000 Cycles
- Package : 1,000 Pcs/Reel
- Operating Temperature Range : -25~+70°C
- Storage Temperature Range : -40~+85°C
- Reflow Soldering Profile : According Reflow Profile  
Max. 2 Times

REVISION:		DATE:		REVISION:		DATE:	
UNIT:mm		THIRD ANGLE PROJECTION METHOD		TOL. UNLESS OTHERWISE STATED:±0.3		CODE NO.: HCH-1956	
ISSUED		CONFIRMED		PART NO.			
<i>John</i>		<i>Elvis</i>		<b>HCH</b> HORNG CHIH		<b>STS-081</b>	
2015.01.23		2015.01.23		ISO9001 Certified ISO14001 Certified 鴻琪股份有限公司			