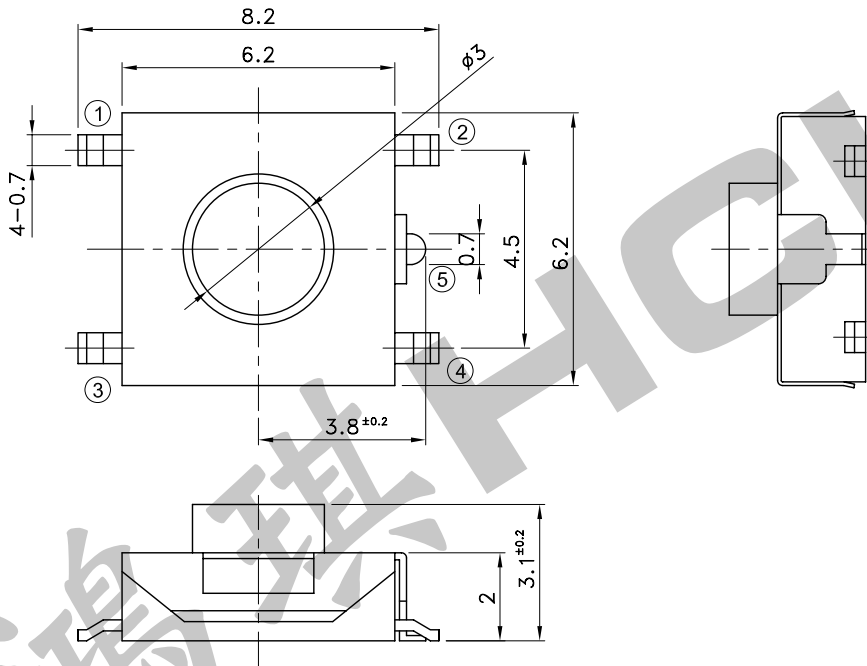
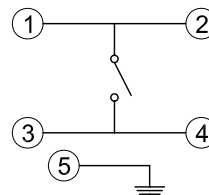
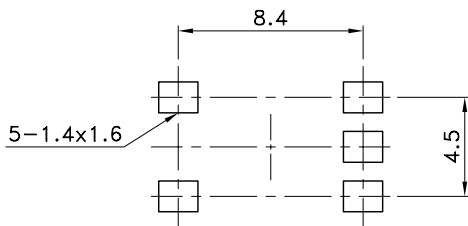


5	Terminal	Brass Strip t=0.3 C2680	Both Sides Ag-Clad	
4	Metal Contact	Phosphor Bronze C5210R	Ag-Plated	
3	Frame	Stainless Steel 10.1 SUS304-H	Ni Plated + Sn both side plated	
2	Housing Comb	PPA Resin		Glass Fiber Contents 30%
1	Stem	PPA Resin		Glass Fiber Contents 30%
No.	Parts	Materials	Finish	Remarks



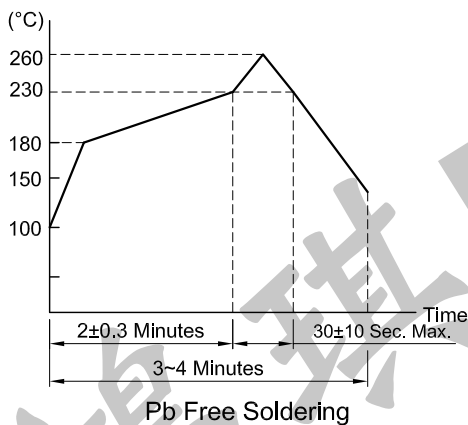
P.C.B TERMINAL POSITION

CIRCUIT ARRANGEMENT



REFLOW SOLDERING CONDITIONS

SPECIFICATIONS



1. Rating : DC 12V 50mA
2. Contact Resistance : 100mΩ Max.
3. Insulation Resistance : 100MΩ Min. at DC 100V.
4. Dielectric Strength : AC 250V for 1 Minute
5. Operating Force : 260±70 gf
6. Stroke : 0.25^{+0.2}_{-0.1} mm
7. Life : 100,000 Cycles
8. Taping : 2,000 Pcs/Reel
9. Operating Temperature Range : -30~+75°C
10. Storage Temperature Range : -40~+85°C
11. Reflow Soldering Profile : According Reflow Profile Max. 2 Times

REVISION:		DATE:		REVISION:		DATE:	
UNIT:mm	THIRD ANGLE PROJECTION METHOD	TOL. UNLESS OTHERWISE STATED:±0.3		CODE NO.:HCH-1597			
ISSUED	CONFIRMED	 HCH [®] HORNG CHIH ISO9001 Certified ISO14001 Certified 鴻琪股份有限公司		PART NO.			
John	Elvis			STS-043-B			
2010.01.07	2010.01.07						