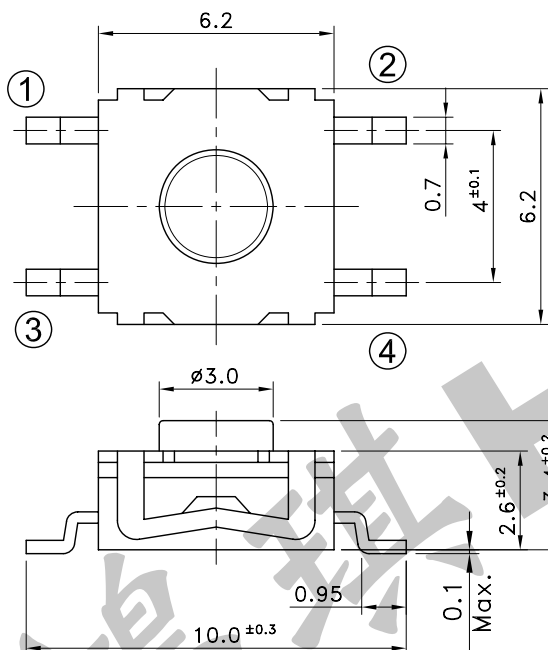
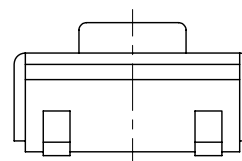


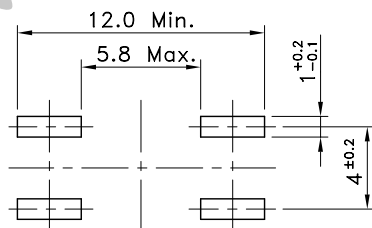
| 5 | Dome Contactor | Stainless SUS301 | | |
|-----|----------------|------------------|------------|----------|
| 4 | Terminal | Brass C2680R-EH | Ag Plating | |
| 3 | Stem | Silicon Rubber | | Green |
| 2 | Cover | Stainless SUS301 | | |
| 1 | Case | PPS | | UL 94V-0 |
| No. | Parts | Material | Finish | Remarks |



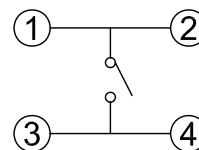
P.C.B TERMINAL POSITION



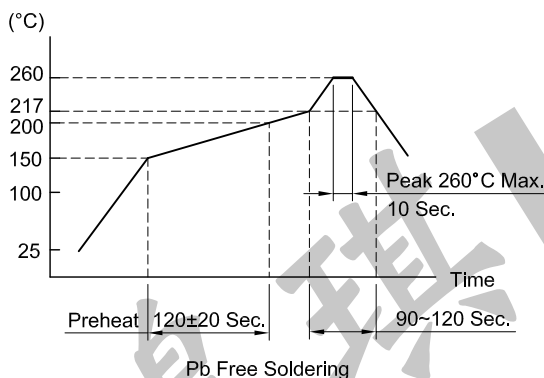
CIRCUIT ARRANGEMENT



REFLOW SOLDERING CONDITIONS



SPECIFICATIONS



1. Rating : DC 12V 50mA
2. Contact Resistance : 100mΩ Max.
3. Insulation Resistance : 100MΩ Min. at DC 500V
4. Dielectric strength : AC 250V for 1 Minute
5. Operating Force : 220±50gf
6. Stroke : 0.25^{+0.2}_{-0.1} mm
7. Life : 1,000,000 Cycles
8. Operating Temperature Range : -30~+85°C
9. Storage Temperature Range : -30~+80°C
10. Manual soldering : Tip Temperature 400°C
Soldering Time 4 Sec.

| | | | |
|-------------|-------------------------------|--|--------------------|
| REVISION: | DATE: | REVISION: | DATE: |
| UNIT:mm | THIRD ANGLE PROJECTION METHOD | TOL. UNLESS OTHERWISE STATED:±0.3 | CODE NO.:HCH-341-7 |
| ISSUED | CONFIRMED | PART NO. | |
| <i>John</i> | <i>Elvis</i> | STS-010 | |
| 2011.04.20 | 2011.04.20 | HCH HORNG CHIH ISO9001 Certified ISO14001 Certified 鴻琪股份有限公司 | |