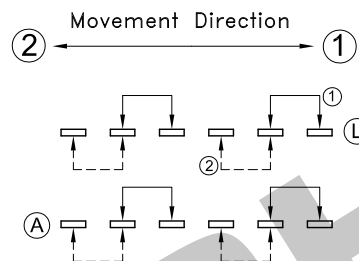
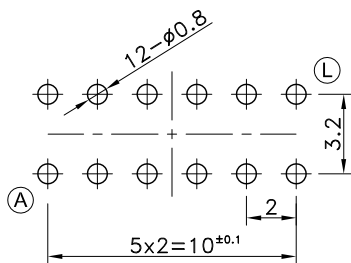


P.C.B TERMINAL POSITION

CIRCUIT ARRANGEMENT



SOLDERING CONDITIONS

SPECIFICATIONS

| | Temperature (°C) | Time (Sec.) |
|------------------|------------------|-------------|
| Auto Soldering | 275 Max. | 6 Max. |
| Manual Soldering | 380 Max. | 3 Max. |

- 1. Rating : DC 12V 200mA Max.
DC 5V 10mA Min.
- 2. Contact Resistance : 50mΩ Max.
- 3. Insulation Resistance : 100MΩ Min. at DC 500V
- 4. Dielectric Strength : AC 500V for 1 Minute
- 5. Insertion & Extraction Force : 150~400gf
- 6. Stroke : 2mm
- 7. Life : 5,000 Cycles
- 8. Operating Temperature Range : -10~+60°C
- 9. Storage Temperature Range : -20~+70°C

| | | | | | | | |
|-------------|--|-------------------------------|--|--|--|-----------------|--|
| REVISION: | | DATE: | | REVISION: | | DATE: | |
| UNIT:mm | | THIRD ANGLE PROJECTION METHOD | | TOL. UNLESS OTHERWISE STATED:±0.3 | | CODE NO.: | |
| ISSUED | | CONFIRMED | | HORNG CHIH HCH® ISO9001 Certified ISO14001 Certified 鴻琪股份有限公司 | | PART NO. | |
| <i>John</i> | | <i>Elvis</i> | | | | SST-4204 | |
| 2008.05.28 | | 2008.05.28 | | | | | |