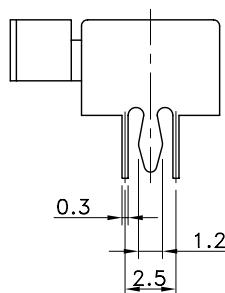
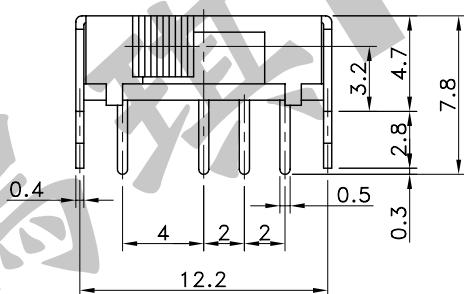
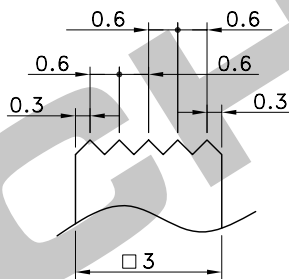
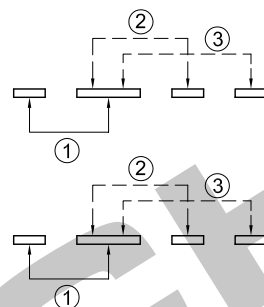
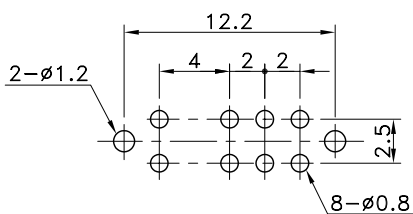


DETAIL A



P.C.B TERMINAL POSITION

CIRCUIT ARRANGEMENT



SOLDERING CONDITIONS

SPECIFICATIONS

	Temperature (°C)	Time (Sec.)
Dip Soldering	260 Max.	1~4
Manual Soldering	350±10	3

1. Rating : DC 30V 200mA
2. Contact Resistance : 30mΩ Max.
3. Insulation Resistance : 100MΩ Min. at DC 500V
4. Dielectric Strength : [Between Terminals] AC 800V for 1 Minute
[Between Terminals and Earth] AC 1,100V for 1 Minute
5. Operating Force : Side → Center: 250±100gf
Center → Side: 300±100gf
6. Stroke : 2 mm
7. Life : 10,000 Cycles
8. Operating Temperature Range : -10~+60°C

REVISION: _____ DATE: _____ REVISION: _____ DATE: _____

UNIT:mm THIRD ANGLE PROJECTION METHOD TOL. UNLESS OTHERWISE STATED:±0.3 CODE NO.: HCH-1346

ISSUED	CONFIRMED	HORNG CHIH HCH <small>ISO9001 Certified ISO14001 Certified</small> 鴻琪股份有限公司	PART NO. SST-2301
John 2008.04.18	Elvis 2008.04.18		