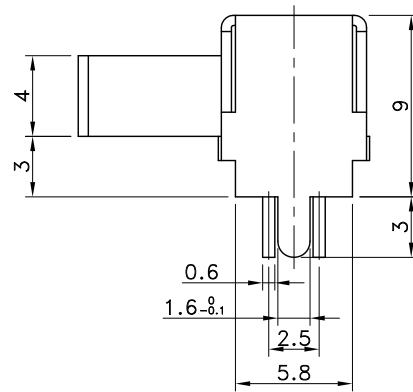
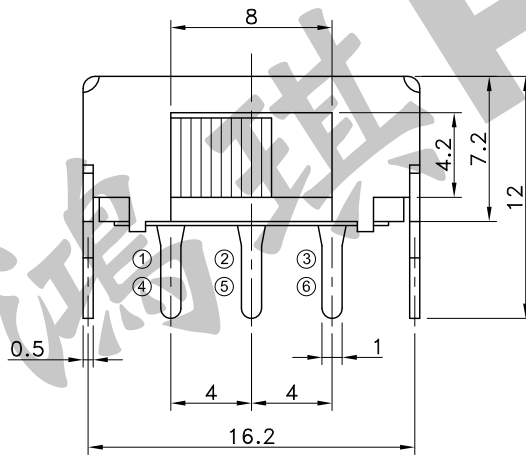
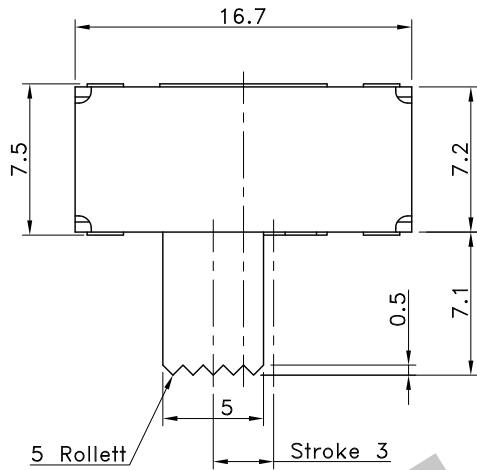
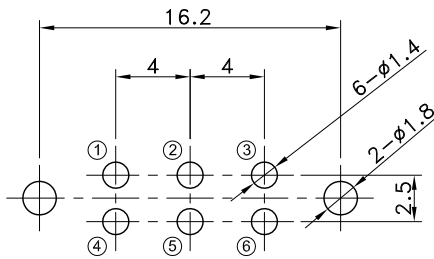


|     |                |                |      |           |         |
|-----|----------------|----------------|------|-----------|---------|
| 6   | Spring         | ∅ 0.23 SWP-A   | 2    | Tempering |         |
| 5   | Contact        | t:0.4 PBP      | 2    | MAG       |         |
| 4   | Terminal       | t:0.6 BSR-H    | 6    | MAG       |         |
| 3   | Terminal Board | t:1.2 PL-PEM-P | 1    |           |         |
| 2   | Knob           | POM            | 1    | Molding   | Black   |
| 1   | Case           | t:0.5 SPC      | 1    | MFSn      |         |
| No. | Parts          | Material       | Q'ty | Finish    | Remarks |



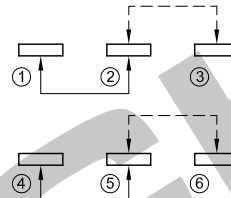
### P.C.B TERMINAL POSITION



### SOLDERING CONDITIONS

|                  | Temperature (°C) | Time (Sec.) |
|------------------|------------------|-------------|
| Manual Soldering | 360 Max.         | 3 Max.      |

### CIRCUIT ARRANGEMENT



### SPECIFICATIONS

- Rating : AC 125V 1A  
DC 30V 1A  
DC 6V 2.2A
- Contact Resistance : 20mΩ Max.
- Insulation Resistance : 100MΩ Min. at DC 500V
- Dielectric Strength : AC 500V for 1 Minute
- Operating Force : 300±150gf
- Stroke : 3 mm
- Life : 10,000 Cycles
- Operating Temperature Range : -10~+60°C

|                           |  |                               |  |  |  |                             |  |
|---------------------------|--|-------------------------------|--|--|--|-----------------------------|--|
| REVISION:                 |  | DATE:                         |  | REVISION:  |  | DATE:                       |  |
| UNIT:mm                   |  | THIRD ANGLE PROJECTION METHOD |  | TOL. UNLESS OTHERWISE STATED:±0.3  |  | CODE NO.:HCH-879-2          |  |
| ISSUED                    |  | CONFIRMED                     |  | <b>HORNG CHIH</b><br>HCH®<br>ISO9001 Certified<br>ISO14001 Certified<br>鴻琪股份有限公司 |  | PART NO.<br><b>SST-2219</b> |  |
| <i>John</i><br>2016.06.23 |  | <i>Elvis</i><br>2016.06.23    |  |  |  |                             |  |