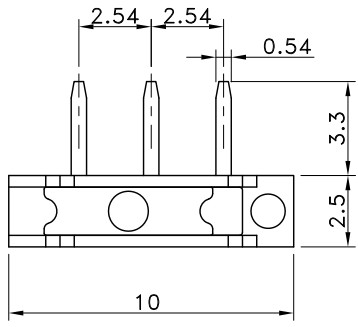
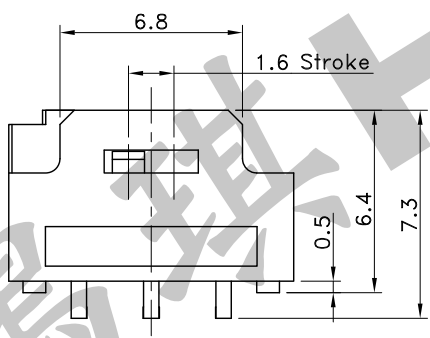


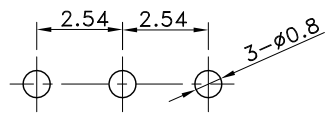
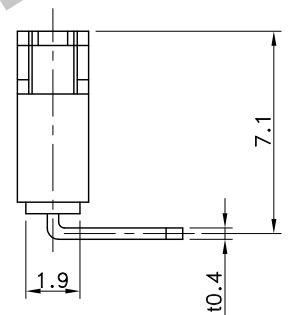
3	Terminal	Nickel	Gold Plate
2	Slide	Glass Fiber Resin	
1	Case	Glass Fiber Resin	
No.	Parts	Material	Finish



P.C.B TERMINAL POSITION

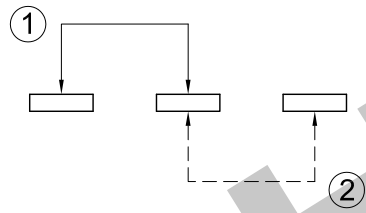


CIRCUIT ARRANGEMENT



SOLDERING CONDITIONS

	Temperature (°C)	Time (Sec.)
Auto Soldering	260	5
Manual Soldering	350	3~4



SPECIFICATIONS

- Rating : DC 12V 500mA~DC 24V 300mA
- Contact Resistance : 30mΩ Max.
- Insulation Resistance : 10,000MΩ Min. at DC 500V
- Dielectric Strength : AC 500V for 1 Minute
- Operating Force : 250±150 gf
- Stroke : 1.6 mm
- Life : 2,000 Cycles (with load)
10,000 Cycles (without load)
- Operating Temperature Range : -40~+85°C
- Storage Temperature Range : -40~+85°C

REVISION:		DATE:		REVISION:		DATE:	
UNIT:mm	THIRD ANGLE PROJECTION METHOD	TOL. UNLESS OTHERWISE STATED:±0.3		CODE NO.: HCH-2303			
ISSUED	CONFIRMED	HCH ISO9001 Certified ISO14001 Certified 鴻琪股份有限公司		PART NO.			
<i>John</i> 2019.10.04	<i>Elvis</i> 2019.10.04			SST-1245			