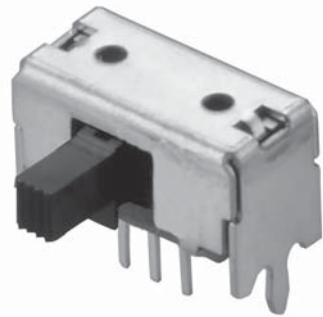


SLIDE SWITCHES

SST-1237 L=6.0mm 1P2T

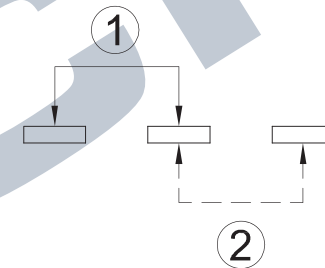
SST-1238 L=9.0mm

SST-1239 L=12.0mm



- Rating: DC30V 100mA
- Stroke: 2.0mm
- Force: 250±120gf
- Life: 10,000 Cycles

Circuit



Mounting Hole Layout

