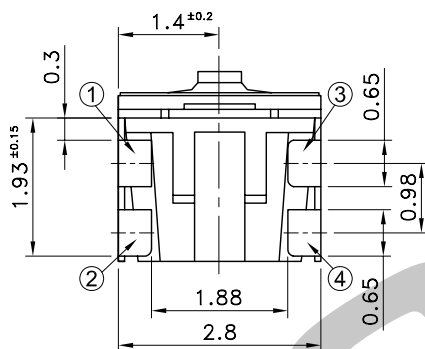
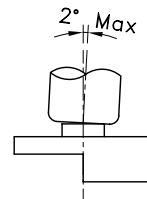
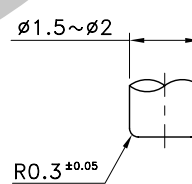
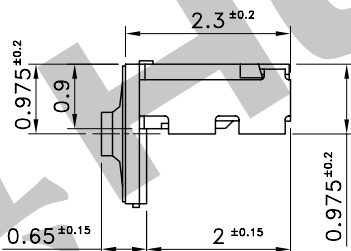
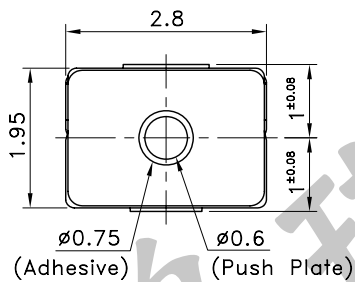


VIEW A

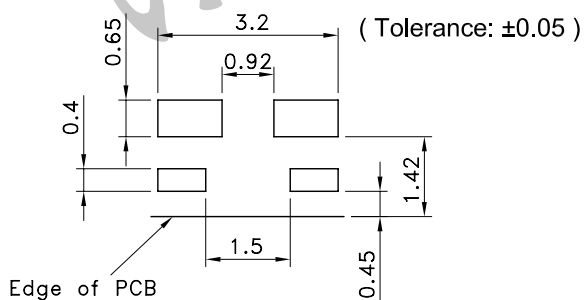


This product is designed to be smaller than the conventional type, which lowered the film peel off strength. Therefore please avoid to apply force to a push plate from side, or/and avoid set-knob to touch push plate during insertion to a set-case.

Recommend use cap shape dimension

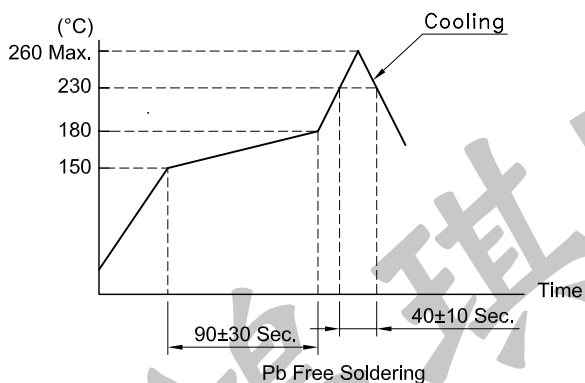


P.C.B TERMINAL POSITION

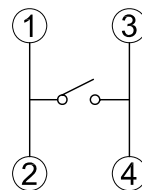


Soldering thickness :  $t=0.1\pm0.02$

SOLDERING CONDITIONS



CIRCUIT ARRANGEMENT



SPECIFICATIONS

1. Rating : DC15V 20mA (Max.)  
: DC2V 10μA (Min.)
2. Contact Resistance : 500mΩ Max.
3. Insulation Resistance : 50MΩ Min. at DC 100V
4. Dielectric strength : AC 250V for 1 Minute
5. Operating Force : 160±50gf
6. Stroke : 0.13±0.1mm
7. Life : 300,000 Cycles
8. Package : 8,000 Pcs/Reel
9. Operating Temperature Range : -40~+85°C
10. Storage Temperature Range : -40~+85°C (Bulk)  
: -20~+60°C (Taping)
11. Reflow soldering : According Reflow Profile  
Max. 2 Times.

REVISION:		DATE:		REVISION:		DATE:	
UNIT:mm		THIRD ANGLE PROJECTION METHOD		TOL. UNLESS OTHERWISE STATED:±0.1		CODE NO.: HCH-1890	
ISSUED		CONFIRMED		<b>HCH</b> HORNG CHIH ISO9001 Certified 鴻琪股份有限公司 ISO14001 Certified		PART NO.	
John		Elvis				PTS-258	
2013.07.03		2013.07.03					