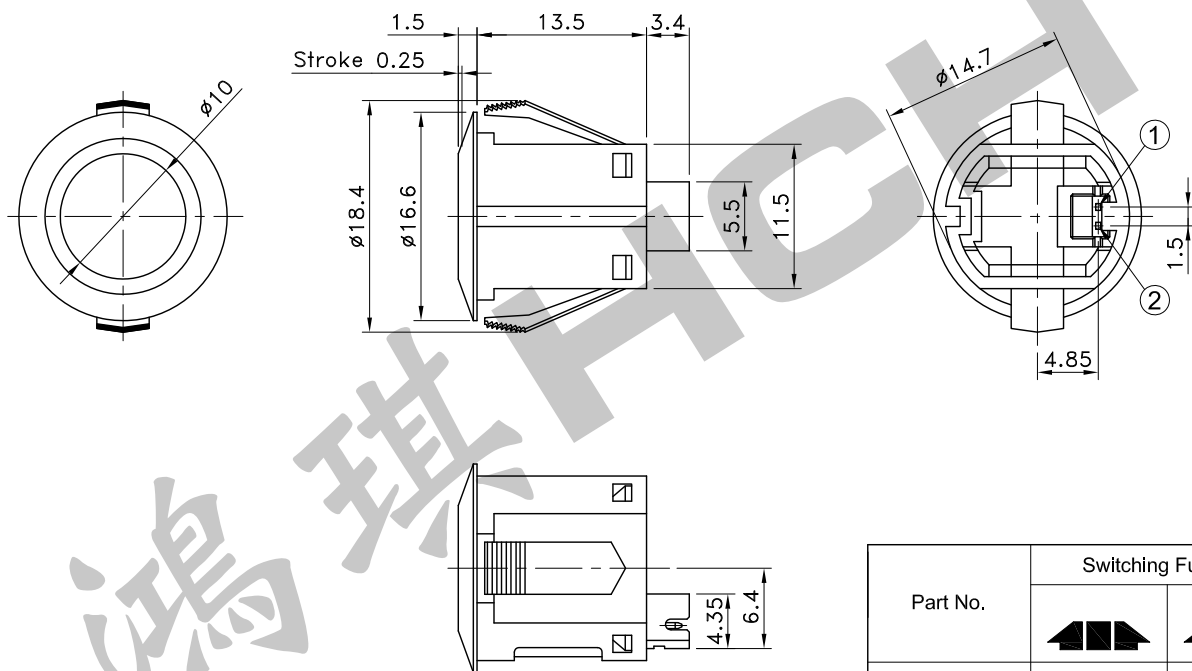


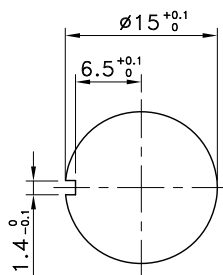
Knob Color	Code
Gray	013
Green	014



Part No.	Switching Function	
		Push
PTS-223	OFF	(ON)
Connecting Terminals	—	① — ②

(ON) = Momentary

PANEL CUT-OUT



Panel Thickness: 1.5~2.5mm

SPECIFICATIONS

- Rating : DC 48V 50mA Max.
- Contact Resistance : 100mΩ Max.
- Insulation Resistance : 100MΩ Min. at DC 100V
- Dielectric Strength : AC 250V for 1 Minute
- Operating Force : 140±40gf
- Stroke : 0.25mm
- Life : 300,000 Cycles
- Operating Temperature Range : -25~+70°C
- Storage Temperature Range : -40~+70°C

REVISION:	DATE:	REVISION:	DATE:
UNIT:mm	THIRD ANGLE PROJECTION METHOD	TOL. UNLESS OTHERWISE STATED:±0.3	CODE NO.: HCH-2012
ISSUED	CONFIRMED	PART NO.	
<i>John</i>	<i>Elvis</i>	PTS-223	
2015.03.05	2015.03.05	HORNG CHIH 鴻琪股份有限公司	