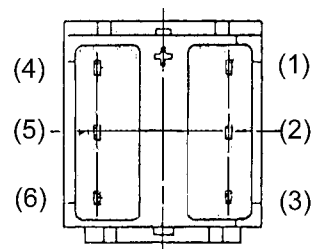
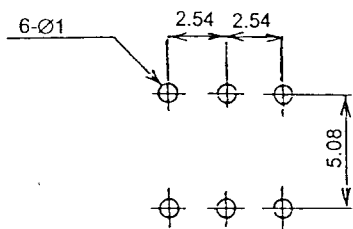


VIEW A



P.C.B. TERMINAL POSITION



4	TERMINAL	6	PHOSPHOR BRONZE	SILVER
3	BUTTON	1	ACETAL RESIN	WHITE
2	COVER	1	POLYAMIDE RESIN	BLACK
1	CASE	1	PBT RESIN	BLACK
NO.	PART NAME	Q'TY	MATERIAL	FINISH

TYPE	CIRCUIT CHARACTERISTICS		CIRCUIT DIAGRAM
	CIRCUIT ARRANGEMENT		
	ON	ON	
PTS-208N	NORMALLY CLOSED	MOMENTARY	
	(1) - (2) (4) - (5)	(2) - (3) (5) - (6)	
PTS-208S	NORMALLY CLOSED	PUSHTOLOCK	
	(1) - (2) (4) - (5)	(2) - (3) (5) - (6)	

SPECIFICATION

- 1. Rating : 0.1A 30V DC
- 2. Insulation Resistance : 100MΩ MIN
- 3. Contact Resistance : 50mΩ MAX
- 4. Dielectric Strength : AC 500 V for 1 minute
- 5. Operating Force : 150 ± 100gf(Momentary)
: 250 ± 100gf(Push to Lock)
- 6. Operating Temperature Range : - 10 ~ + 70° C
- 7. Life : 10,000 Times
- 8. Contacts : Nonshorting Type

REVISION:	DATE:	REVISION:	DATE:
UNIT:mm	THIRD ANGLE PROJECTION METHOD	TOL. UNLESS OTHERWISE STATED: ±0.3	CODE NO.: HCH-TP1/TPL1
ISSUED	CONFIRMED	PART NO.	
<i>Puccini</i>	<i>Susan</i>	PTS-208	
01.03.01	01.03.01	HCH HORNG CHIH SWITCH 鴻琪股份有限公司	