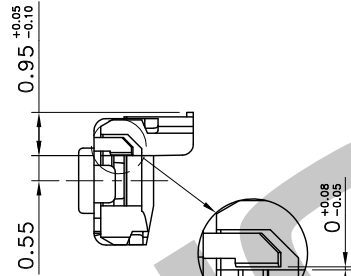
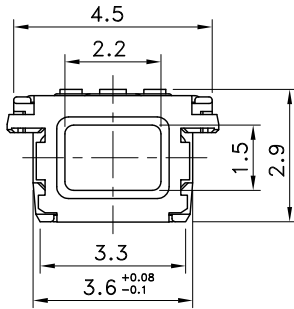
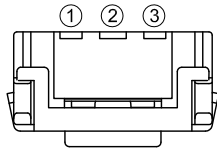
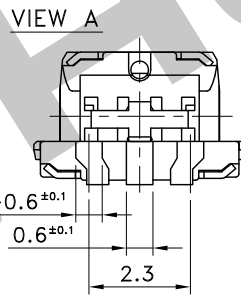
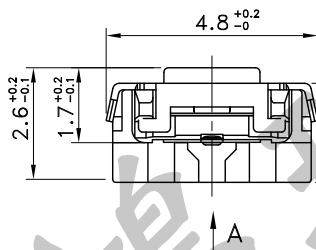
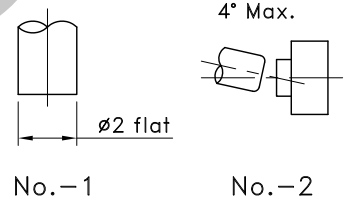


Part No.	Operating Force
PTS-199-A	160±50gf
PTS-199-B	300±80gf
PTS-199-C	350±100gf

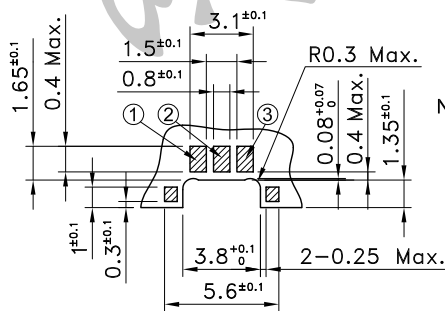


Recommended key top:  
Design key top as No.-1. Design inclination of key top 4 deg. max. as No.-2. Tolerance between switch and key top is within 0.3mm.

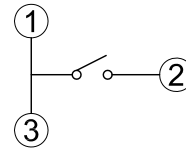


**P.C.B TERMINAL POSITION**

**CIRCUIT ARRANGEMENT**

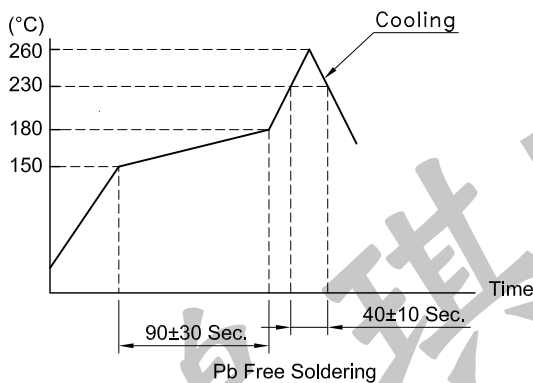


Note: Please put your consideration not to let any burrs of printed wiring board stick out from the mounting surface of our switches.



**SOLDERING CONDITIONS**

**SPECIFICATIONS**



- Rating : DC2V 10µA ~ DC15V 20mA
- Contact Resistance : 1,000mΩ Max.
- Insulation Resistance : 100MΩ Min. at DC 100V
- Dielectric Strength : AC 250V for 1 Minute
- Stroke : 0.15±0.1 mm
- Life : 200,000 Cycles
- Taping : 3,500 Pcs/Reel
- Operating Temperature Range : -40~+85°C
- Storage Temperature Range : -40~+85°C (Bulk)  
-20~+60°C (Taping)
- Reflow Soldering Profile : According Reflow Profile 2 Times

REVISION:	DATE:	REVISION:	DATE:
UNIT:mm	THIRD ANGLE PROJECTION METHOD	TOL. UNLESS OTHERWISE STATED:±0.2	CODE NO.:HCH-2338
ISSUED	CONFIRMED	PART NO.	
John	Elvis	PTS-199	
2020.04.21	2020.04.21	<b>HORNG CHIH</b> 鴻琪股份有限公司	