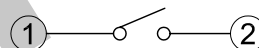
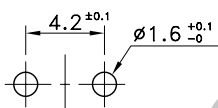
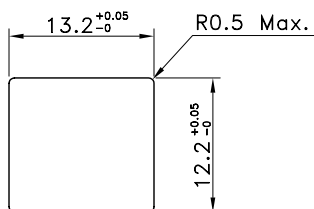


PANEL CUT-OUT

P.C.B TERMINAL POSITION

CIRCUIT ARRANGEMENT



SOLDERING CONDITIONS

SPECIFICATIONS

	Temperature (°C)	Time (Sec.)
Manual Soldering	300 Max.	5 Max.

1. Rating : DC 30V 100 mA
2. Contact Resistance : 30mΩ Max. at DC 15V 100mA
3. Insulation Resistance : 100MΩ Min. at DC 500V
4. Dielectric Strength : AC 250V for 1 Minute
5. Operating Force : 100±30gf
6. Stroke : 2.5±0.3mm
7. Life : 2,000,000 Cycles
8. Operating Temperature Range : -5~+45°C

REVISION:

DATE:

REVISION:

DATE:

UNIT:mm

THIRD ANGLE PROJECTION METHOD

TOL. UNLESS OTHERWISE STATED:±0.3

CODE NO.:HCH-1428

ISSUED

CONFIRMED

PART NO.

John

Elvis

HCH
ISO9001 Certified
ISO14001 Certified

HORNG CHIH

鴻琪股份有限公司

PTS-189

2008.10.21

2008.10.21