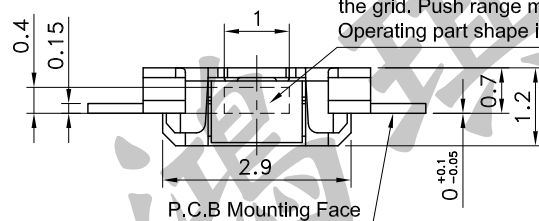
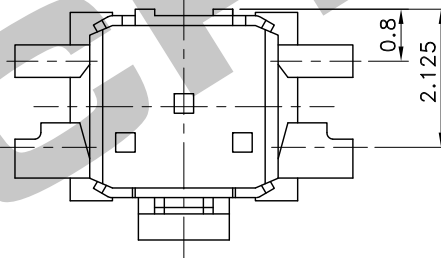
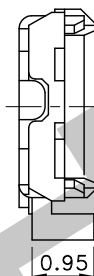
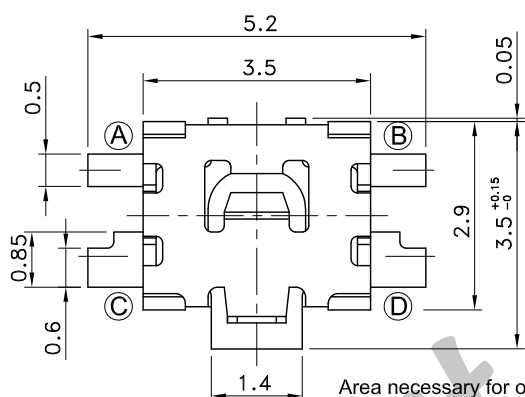
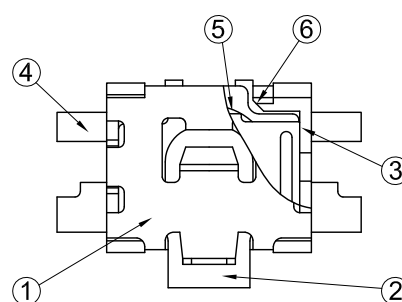


5	Contact Plate	Stainless Steel Plate	2	Ag Plating	
4	Terminal	Copper Alloy	4	Ag Plating over Ni Plating	
3	Frame	Polyamide Resin	1		Black
2	Stem	Polyamide Resin	1		
1	Cover	Stainless Steel Plate	1		
No.	Parts	Material	Q'ty	Finish	Remarks

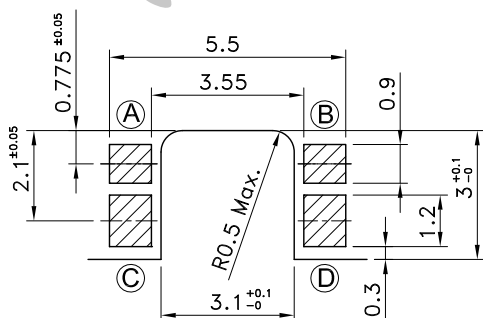
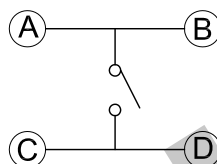
Part No.	Operating Force	Stem Color
PTS-176-A	160 ⁺⁷⁰ ₋₄₀ gf	Black
PTS-176-B	220 ⁺⁸⁰ ₋₇₀ gf	Nature



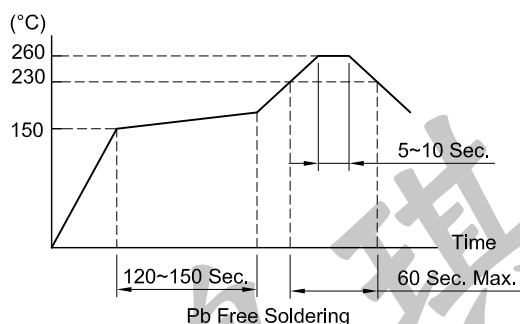
P.C.B TERMINAL POSITION



CIRCUIT ARRANGEMENT



SOLDERING CONDITIONS



SPECIFICATIONS

- Rating : DC12V 50mA
- Contact Resistance : 500mΩ Max.
- Insulation Resistance : 100MΩ Min. at DC 500V
- Dielectric Strength : AC 250V for 1 Minute
- Stroke : 0.2^{+0.2}_{-0.1} mm
- Life : 100,000 Cycles
- Taping : 3,000 Pcs/Reel
- Operating Temperature Range : -40~+85°C
- Storage Temperature Range : -40~+85°C
- Reflow Soldering Profile : According Reflow Profile
Max. 2 Times
- Manual soldering : Tip Temperature 350°C Max.
Soldering Time 3 Sec. Max.

REVISION: _____ DATE: _____ REVISION: _____ DATE: _____

UNIT:mm THIRD ANGLE PROJECTION METHOD TOL. UNLESS OTHERWISE STATED:±0.1 CODE NO.:HCH-1915-1 (T)

ISSUED	CONFIRMED		HORNG CHIH 鴻琪股份有限公司	PTS-176
<i>John</i> 2018.06.12	<i>Elvis</i> 2018.06.12			