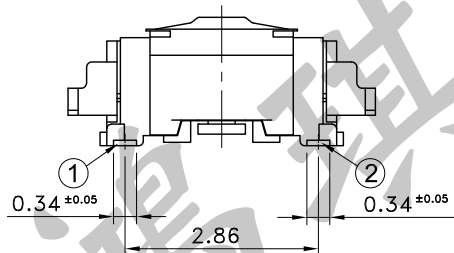
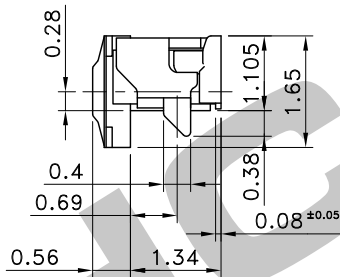


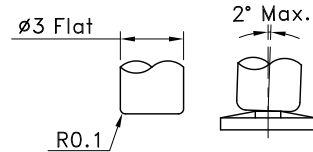
SECT A-A



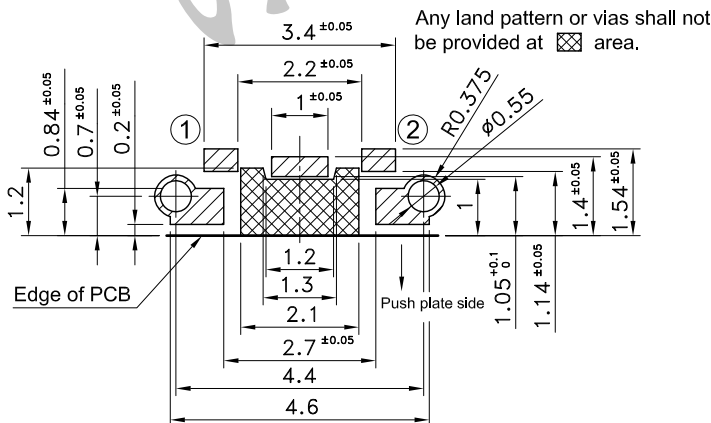
P.C.B TERMINAL POSITION



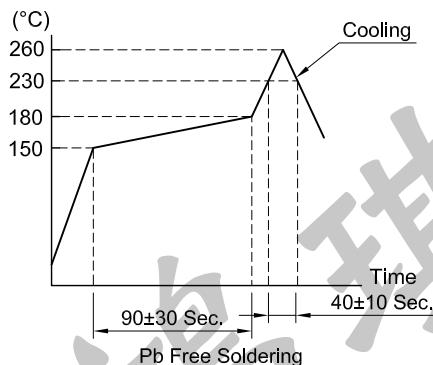
Recommend use cap shape dimension



CIRCUIT ARRANGEMENT



SOLDERING CONDITIONS



SPECIFICATIONS

1. Rating : DC2V 10 μ A ~ DC15V 20mA
2. Contact Resistance : 500m Ω Max.
3. Insulation Resistance : 50M Ω Min. at DC 100V
4. Dielectric strength : AC 250V for 1 Minute
5. Operating Force : 160 \pm 50 gf
6. Stroke : 0.11 \pm 0.05 mm
7. Life : 500,000 Cycles
8. Package : 10,000 Pcs/Reel
9. Operating Temperature Range : -40~+85°C
10. Storage Temperature Range : -40~+85°C (Bulk)
-20~+60°C (Taping)
11. Reflow soldering : According Reflow Profile
Max. 2 Times. Re-soldering by soldering iron shall be allowed under 350°C max. 3 sec. max.

REVISION:		DATE:		REVISION:		DATE:	
UNIT:mm		THIRD ANGLE PROJECTION METHOD		TOL. UNLESS OTHERWISE STATED:±0.1		CODE NO.: HCH-2047-1	
ISSUED		CONFIRMED		PART NO.		PTS-159	
John		Elvis		HCH® HORNG CHIH ISO9001 Certified ISO14001 Certified 鴻琪股份有限公司			
2018.05.30		2018.05.30					