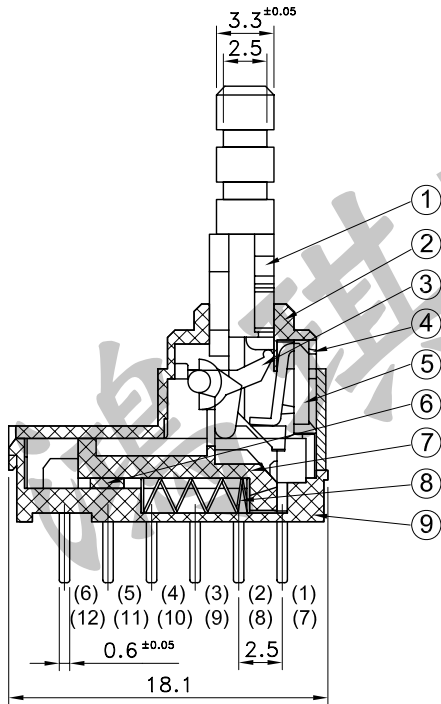
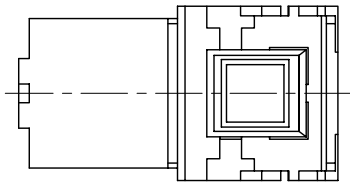


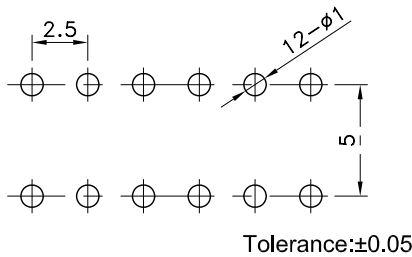
9	Base	Brass Strip	1
		PBT	1
8	Spring	Carbon Steel	1
7	Contact	Ag-Covered Phosphor Bronze	4
6	Slide	POM	1
5	Elastic Plate	Phosphor Copper	1
4	Lock	Phosphor Copper	1
3	Fork	POM	1
2	Cover	PC	1
1	Pluger	POM	1
No.	Parts	Material	Q'ty

* PTS-111N without ④, ⑤

Part No.	Operating
PTS-111S	PUSH TO LOCK
PTS-111N	PUSH NO LOCK

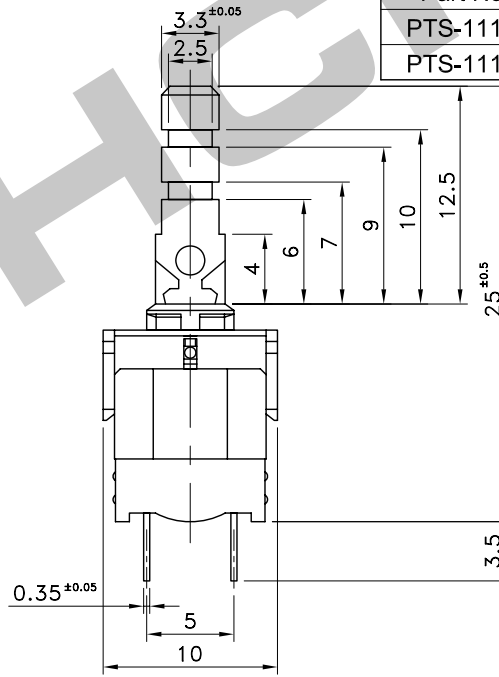


P.C.B TERMINAL POSITION

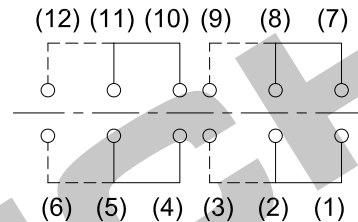


SOLDERING CONDITIONS

	Temperature (°C)	Time (Sec.)
Auto Soldering	260±5	5±1
Manual Soldering	350±5	2~3



CIRCUIT ARRANGEMENT



SPECIFICATIONS

- Rating : DC 30V 100 mA
- Contact Resistance : 50mΩ Max.
- Insulation Resistance : 100MΩ Min. at DC 500V
- Dielectric Strength : AC 500V for 1 Minute
- Operating Force : 280±100gf
- Stroke : Full 3.4±0.3 Lock 2.2±0.3mm
- Life : 20,000 Cycles
- Operating Temperature Range : -10~+60°C

REVISION:		DATE:		REVISION:		DATE:	
UNIT:mm		THIRD ANGLE PROJECTION METHOD		TOL. UNLESS OTHERWISE STATED:±0.3		CODE NO.: HCH-1802	
ISSUED		CONFIRMED		PART NO.		PTS-111	
John		Elvis		HCH® HORNG CHIH			
2011.12.02		2011.12.02		鴻琪股份有限公司			