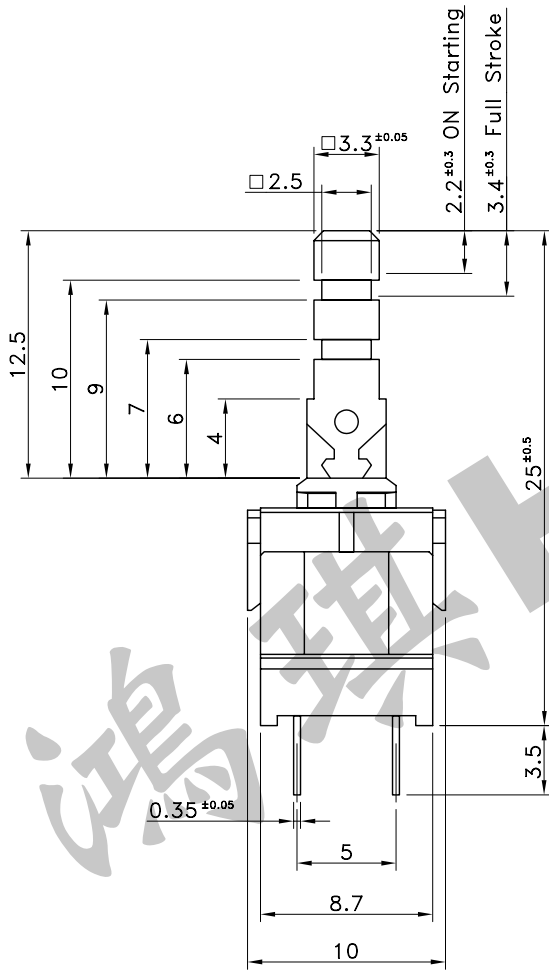
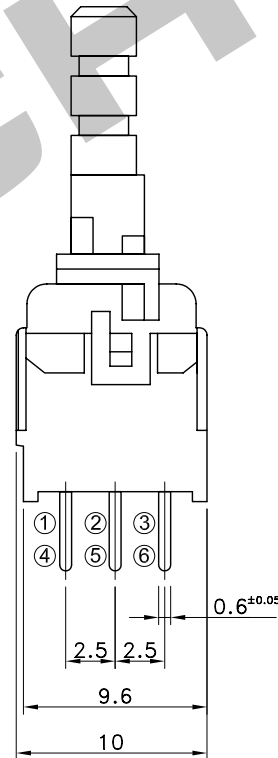


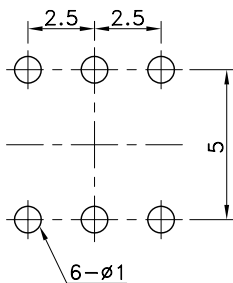
Part No.	Operating
PTS-110S	PUSH TO LOCK
PTS-110N	PUSH NO LOCK



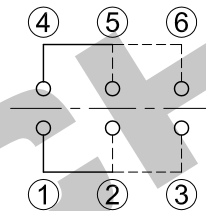
P.C.B TERMINAL POSITION



CIRCUIT ARRANGEMENT




SOLDERING CONDITIONS



SPECIFICATIONS

1. Rating : DC 30V 100 mA
2. Contact Resistance : 50mΩ Max.
3. Insulation Resistance : 100MΩ Min.
4. Dielectric Strength : AC 500V for 1 Minute
5. Operating Force : 250±80gf
6. Stroke : Full 3.4±0.3 Lock 2.2±0.3mm
7. Life : 20,000 Cycles
8. Operating Temperature Range : -10~+60°C

	Temperature (°C)	Time (Sec.)
Auto Soldering	260±5	5±1
Manual Soldering	350±5	2~3

REVISION:	DATE:	REVISION:	DATE:
UNIT:mm	THIRD ANGLE PROJECTION METHOD	TOL. UNLESS OTHERWISE STATED:±0.3	CODE NO.:HCH-1217-1
ISSUED	CONFIRMED	PART NO.	
John	Elvis	PTS-110	
2008.07.30	2008.07.30	 <b>HORNG CHIH</b> 鴻琪股份有限公司	