

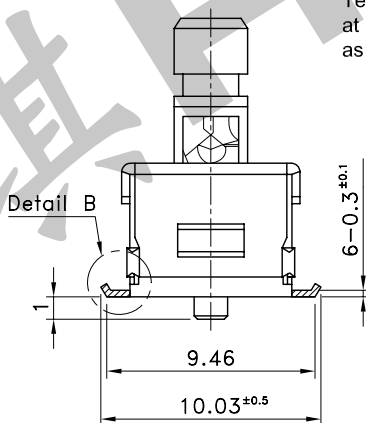
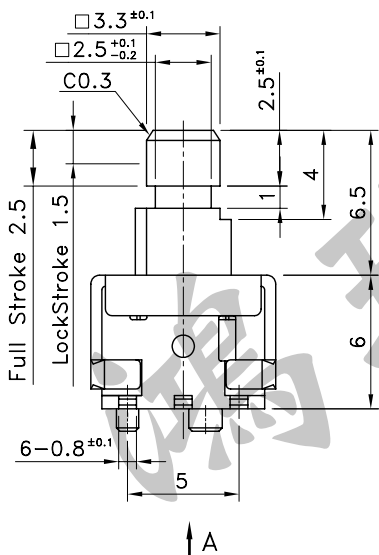
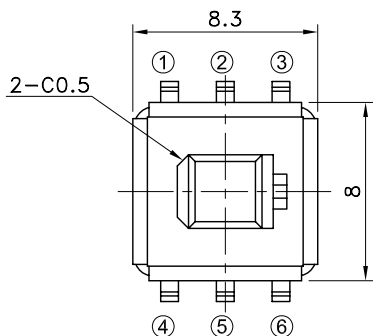
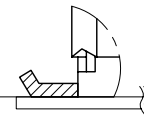
7	Metallic Housing	SPTE-T2.5-25	Sn Plating	
6	Spring	SWPB		
5	Wiper	Brass, Bronze or Copper Alloy	Ag Plating	
4	Latch Pin	SUS (Stainless Steel)		
3	Contact Terminal	Phosphor Bronze	Ag Plating	
2	Housing	PA6T		
1	Shaft	PA6T		Black
No.	Parts	Material	Finish	Remarks

* PTS-065N without (4)

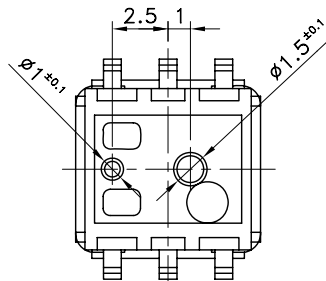
Part No.	Operating Force	Operating
PTS-065S-C	300±100gf	PUSH TO LOCK
PTS-065N-C	300±100gf	PUSH NO LOCK
PTS-065S-E	500±150gf	PUSH TO LOCK
PTS-065N-E	500±150gf	PUSH NO LOCK

Float: 0.15mm Max.
Laterality: ±0.1mm Max.

Terminal positions shall have tolerance at hatching part (Detail B) after soldering as follows.

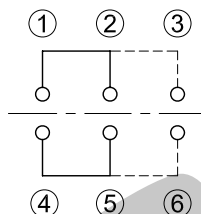
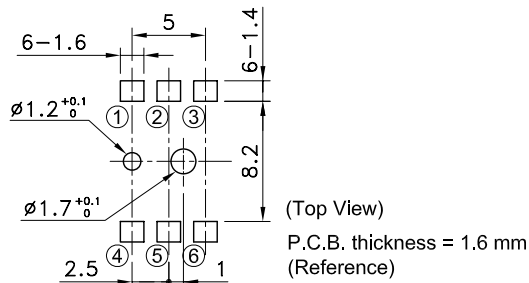


VIEW A



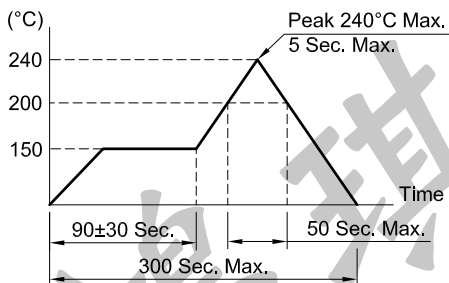
P.C.B TERMINAL POSITION

CIRCUIT ARRANGEMENT



SOLDERING CONDITIONS

SPECIFICATIONS



- Rating : DC 14V 200mA
- Contact Resistance : 50mΩ Max.
- Insulation Resistance : 100MΩ Min. at DC 500V
- Dielectric Strength : AC 500V for 1 Minute
- Stroke : Full 2.5±0.3 Lock 1.5±0.3 mm
- Life : 50,000 Cycles
- Package : 300 Pcs/Reel
- Operating Temperature Range : -40~+85°C
- Storage Temperature Range : -40~+95°C
- Reflow Soldering Profile : According Reflow Profile 2 Times

REVISION: _____ DATE: _____ REVISION: _____ DATE: _____

UNIT:mm THIRD ANGLE PROJECTION METHOD TOL. UNLESS OTHERWISE STATED:±0.3 CODE NO.: HCH-1908

ISSUED	CONFIRMED	HCH ISO9001 Certified ISO14001 Certified HORNG CHIH 鴻琪股份有限公司	PART NO.
John	Elvis		PTS-065
2013.10.30	2013.10.30		