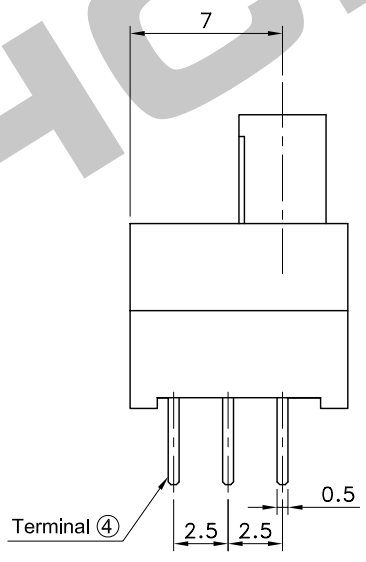
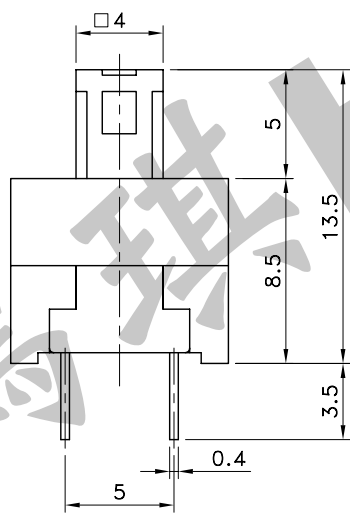
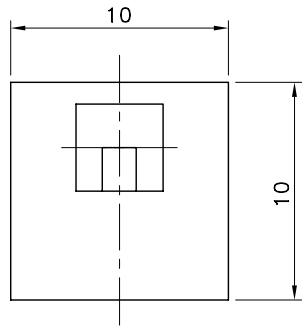
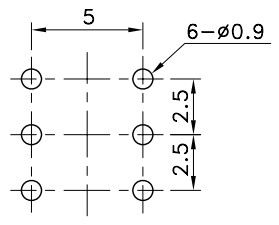


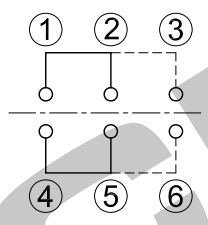
Part No.	Operating	Push Color
PTS-052S	PUSH TO LOCK	Blue
PTS-052N	PUSH NO LOCK	White



P.C.B TERMINAL POSITION



CIRCUIT ARRANGEMENT



SOLDERING CONDITIONS

	Temperature (°C)	Time (Sec.)
Auto Soldering	260±5	5±1
Manual Soldering	350±10	3

SPECIFICATIONS

1. Rating : DC 30V 100mA
2. Contact Resistance : 50mΩ Max. at DC 5V 1A
3. Insulation Resistance : 100MΩ Min. at DC 500V
4. Dielectric Strength : AC 500V for 1 Minute
5. Operating Force : 200±50gf
6. Stroke : Full 2.5 Lock 1.5 mm
7. Life : 10,000 Cycles
8. Operating Temperature Range : -10~+60°C

REVISION:		DATE:		REVISION:		DATE:	
UNIT:mm	THIRD ANGLE PROJECTION METHOD	TOL. UNLESS OTHERWISE STATED:±0.3		CODE NO.:HCH-1723			
ISSUED	CONFIRMED	 <b>HCH</b> HORNG CHIH ISO9001 Certified ISO14001 Certified 鴻琪股份有限公司				PART NO.	
John	Elvis					PTS-052	
2010.12.15	2010.12.15						