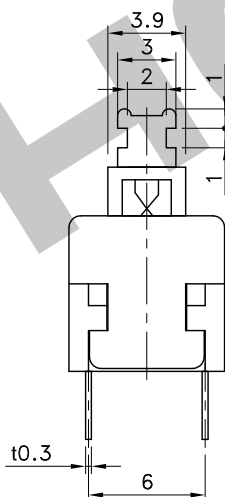
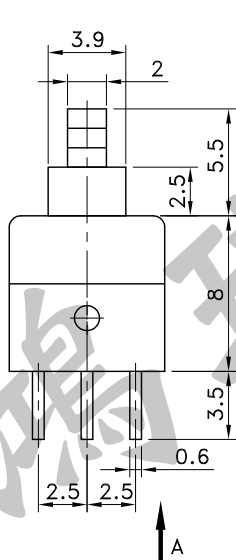
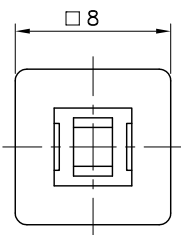
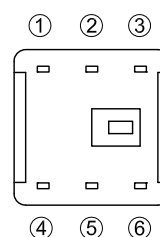


7	Spring	∅0.23 Stainless Steel , SUS 304WPB
6	Clip	t0.055 Phosphor Bronze , Ag-C5210R-EH
5	Camstick	∅0.6 Stainless Steel , SUS 304WPB
4	Push	Acetal , LUCEL N127LD-P
3	Cover	Acetal , LUCEL N127LD-P
2	Case	PBT , T706BK
1	Terminal	t0.3 Brass , C2680R-H
No.	Parts	Material

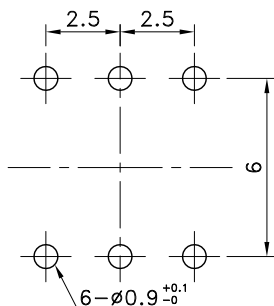
Part No.	Operating	Operating Force
PTS-020SB	PUSH TO LOCK	300±100gf



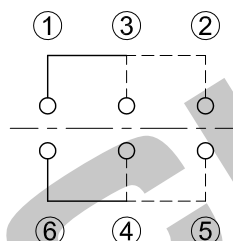
VIEW A



P.C.B TERMINAL POSITION



CIRCUIT ARRANGEMENT



SOLDER HEAT RESISTANCE

	Temperature (°C)	Time (Sec.)
Auto Soldering	255 Max.	5 Max.
Manual Soldering	350±5	5 Max.

SPECIFICATIONS

- Rating : DC 30V 100 mA
- Contact Resistance : 100mΩ Max.
- Insulation Resistance : 100MΩ Min. at DC 500V
- Dielectric Strength : AC 500V for 1 Minute
- Stroke : Full stroke:2.5mm
Lock stroke:1.5mm
- Life : 10,000 Cycles
- Operating Temperature Range : -10~+60°C

REVISION: _____ DATE: _____ REVISION: _____ DATE: _____

UNIT:mm THIRD ANGLE PROJECTION METHOD TOL. UNLESS OTHERWISE STATED:±0.3 CODE NO.: HCH-392-2 (D)

ISSUED	CONFIRMED	HORNG CHIH 鴻琪股份有限公司	PART NO.
<i>John</i> 2012.06.11	<i>Elvis</i> 2012.06.11		PTS-020SB