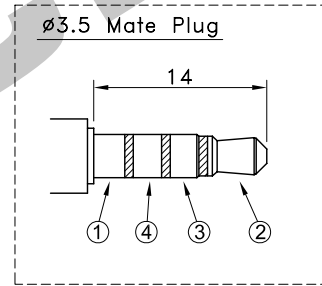
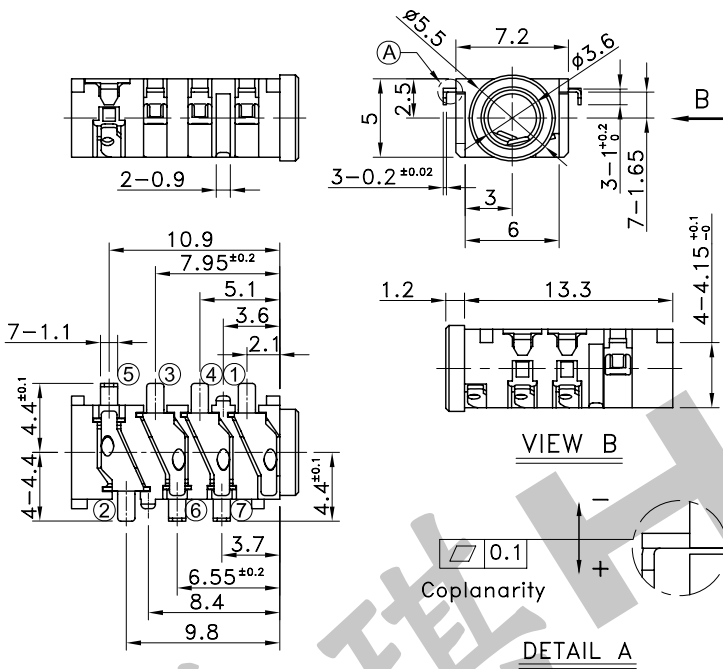
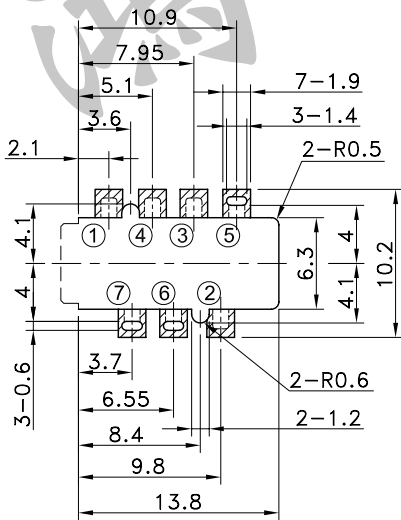


8	Terminal 7	Brass	Gold Flash
7	Terminal 6	Brass	Gold Flash
6	Terminal 5	Brass	Gold Flash
5	Terminal 4	Copper Alloy	Gold Flash
4	Terminal 3	Copper Alloy	Gold Flash
3	Terminal 2	Copper Alloy	Gold Flash
2	Terminal 1	Copper Alloy	Gold Flash
1	Body	PA	
No.	Parts	Material	Finish



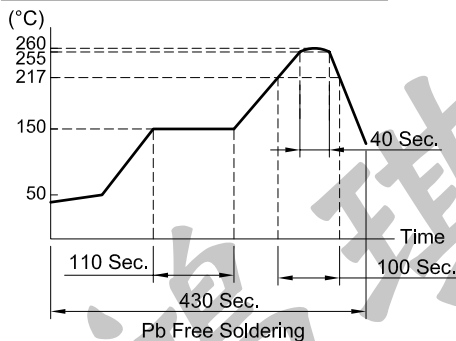
P.C.B TERMINAL POSITION



CIRCUIT ARRANGEMENT

Part No.	Circuit Diagram	Terminal Arrangement Figure
PJK-695		
PJK-696		
PJK-697		
PJK-698		
PJK-699		

SOLDERING CONDITIONS



SPECIFICATIONS

- Rating : DC 12V 1A Max.
- Contact Resistance : 50mΩ Max.
- Insulation Resistance : 100MΩ Min. at DC 500V
- Dielectric Strength : AC 500V for 1 Minute
- Insertion & Extraction Force : 0.3~3kgf
- Life : 5,000 Cycles
- Taping Package : 1,000 Pcs/Reel
- Operating Temperature Range : -25~+85°C
- Reflow Soldering Profile : According Reflow Profile 2 Times

REVISION:	DATE:	REVISION:	DATE:
UNIT:mm	THIRD ANGLE PROJECTION METHOD	TOL. UNLESS OTHERWISE STATED:±0.3	CODE NO.:HCH-1783
ISSUED	CONFIRMED	PART NO.	
John	Elvis	PJK-695	PJK-696
2011.11.02	2011.11.03	PJK-697	PJK-698
		PJK-699	
		HORNG CHIH 鴻琪股份有限公司	