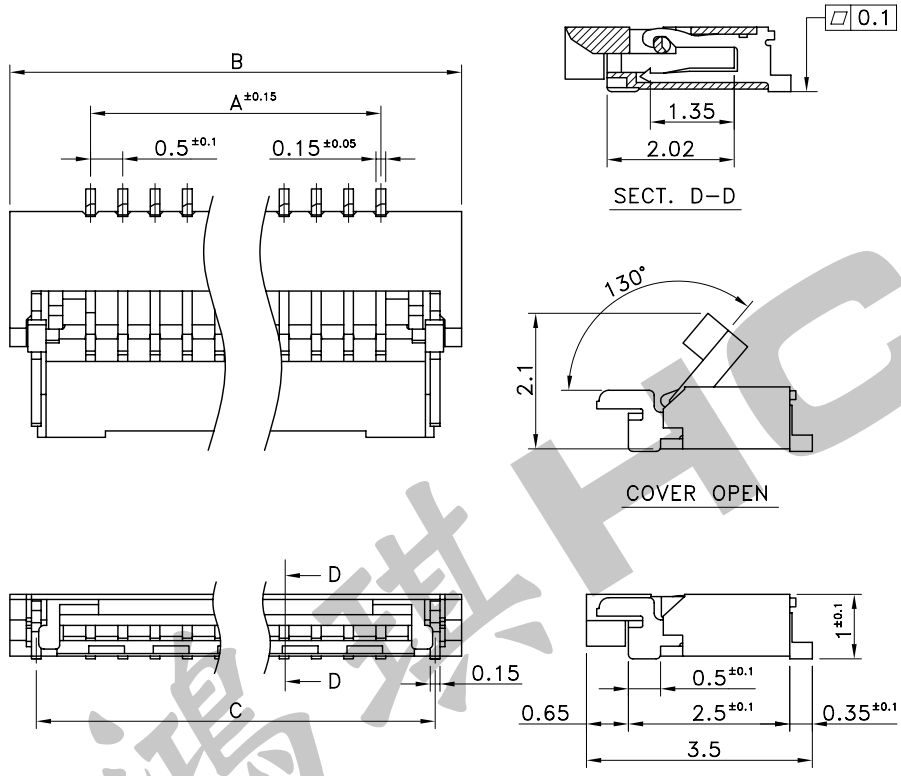
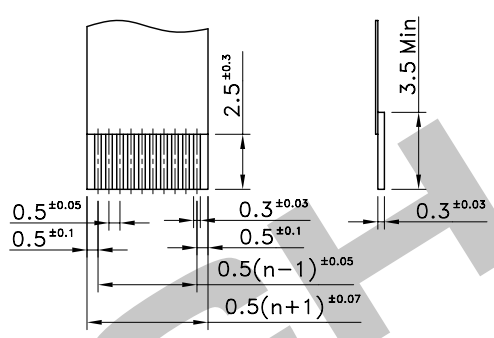
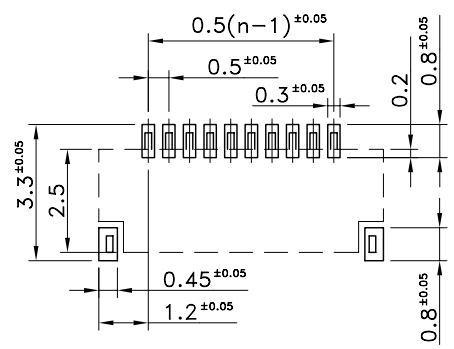


PARTS NO.	PINS	A	B	C
FPC12-06	6	2.5	5.0	4.35
FPC12-07	7	3.0	5.5	4.85
FPC12-08	8	3.5	6.0	5.35
FPC12-09	9	4.0	6.5	5.85
FPC12-10	10	4.5	7.0	6.35
FPC12-11	11	5.0	7.5	6.85
FPC12-12	12	5.5	8.0	7.35
FPC12-13	13	6.0	8.5	7.85
FPC12-14	14	6.5	9.0	8.35
FPC12-15	15	7.0	9.5	8.85
FPC12-16	16	7.5	10.0	9.35
FPC12-17	17	8.0	10.5	9.85
FPC12-18	18	8.5	11.0	10.35
FPC12-19	19	9.0	11.5	10.85
FPC12-20	20	9.5	12.0	11.35
FPC12-21	21	10.0	12.5	11.85
FPC12-22	22	10.5	13.0	12.35
FPC12-23	23	11.0	13.5	12.85
FPC12-24	24	11.5	14.0	13.35
FPC12-25	25	12.0	14.5	13.85
FPC12-26	26	12.5	15.0	14.35
FPC12-27	27	13.0	15.5	14.85
FPC12-28	28	13.5	16.0	15.35
FPC12-29	29	14.0	16.5	15.85
FPC12-30	30	14.5	17.0	16.35
FPC12-31	31	15.0	17.5	16.85
FPC12-32	32	15.5	18.0	17.35
FPC12-33	33	16.0	18.5	17.85
FPC12-34	34	16.5	19.0	18.35
FPC12-35	35	17.0	19.5	18.85
FPC12-36	36	17.5	20.0	19.35
FPC12-37	37	18.0	20.5	19.85
FPC12-38	38	18.5	21.0	20.35
FPC12-39	39	19.0	21.5	20.85
FPC12-40	40	19.5	22.0	21.35



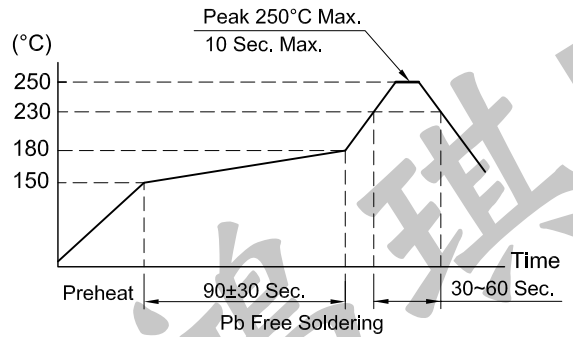
P.C.B TERMINAL POSITION

FPC • FFC DIMENSIONS



OLDERING CONDITIONS

SPECIFICATIONS



1. Rating : AC/DC 50V 500mA
2. Contact Resistance : 50mΩ Max.
3. Insulation Resistance : 100MΩ Min. at DC 150V
4. Dielectric Strength : AC 250V for 1 Minute
5. Package : 5,000 Pcs/Reel
6. Operating Temperature Range : -40~+85°C
7. Reflow soldering : According Reflow Profile Max. 2 Times

REVISION:	DATE:	REVISION:	DATE:
UNIT:mm	THIRD ANGLE PROJECTION METHOD	TOL. UNLESS OTHERWISE STATED:±0.3	CODE NO.:HCH-903-2
ISSUED	CONFIRMED	PART NO.	
John	Elvis	FPC12	
2009.04.14	2009.04.14	HORNG CHIH 鴻琪股份有限公司	