

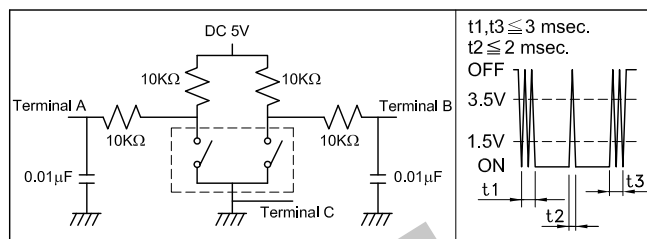
SPECIFICATIONS

• ELECTRICAL CHARACTERISTICS

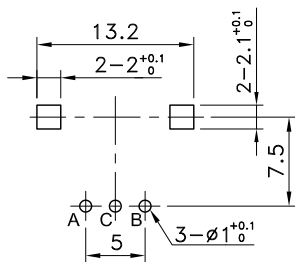
- Rating : DC 5V 0.5mA (Terminals A and B)
DC 5V 1mA (Terminal C)
- Insulation Resistance: 10MΩ Min.at DC 50V
- Dielectric Strength : AC 50V for 1 minute
- Output Signal Format

Shaft Rotational Direction	Signal	Output
C.W	A	OFF
	(Terminal A-C)	ON
	B	OFF
	(Terminal B-C)	ON

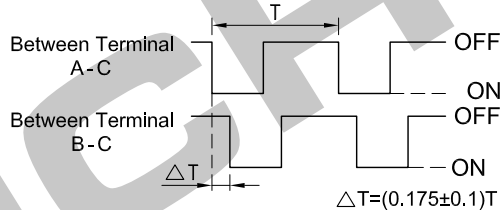
- Resolution : 12 Pulses /360° for Each Phase
- Chattering : Measurement shall be done under the measuring circuit in Figure below by rotating the shaft at a speed of 360° per second. Chattering is specified by the signal's passage time from 3.5 to 1.5V or from 1.5 to 3.5V of each switching position (code OFF → ON or ON → OFF).



P.C.B TERMINAL POSITION



- Phase Difference : The shaft shall be rotated at constant speed (for those not having detents).



SOLDERING CONDITIONS

	Temperature (°C)	Time (Sec.)
Auto Soldering	255±5	5±1
Manual Soldering	380±10	3 ⁺¹ ₀

- Operating Temperature Range : -10~+70°C

• MECHANICAL CHARACTERISTICS

- Rotational Angle : 360°(Endless)
- Position Detents : 12 Detents (30±3° Step)
- Detent Torque : 20~200 gf • cm
- Life : 30,000 Cycles
- Shaft Play in Axial Direction : 0.4 mm p-p Max.

REVISION:

DATE:

REVISION:

DATE:

UNIT:mm

THIRD ANGLE PROJECTION METHOD

TOL. UNLESS OTHERWISE STATED:±0.3

CODE NO.:HCH-1052-1

ISSUED

CONFIRMED

PART NO.

John

Elvis

HCH
ISO9001 Certified
ISO14001 Certified

HORNG CHIH

鴻琪股份有限公司

EVR112V-020

2012.07.02

2012.07.02