

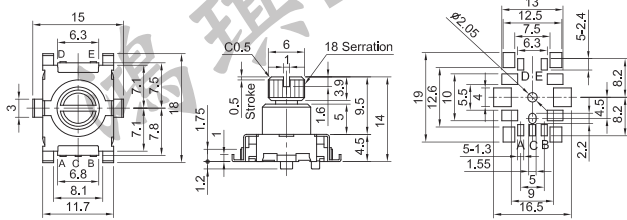
ENCODERS

WITH CLICK & PUSH

EVR011SS-014 30 Position

- Rating: DC5V 10mA
- Detent Position and Angle: 30 Position (12°)
- Detent Torque: 100±70gf · cm
- Rotation Torque: 100±70gf · cm
- Rotation Life: 10,000 Cycles
- Switch Rating: DC16V 5A
- Switch Force: 400±150gf
- Switch Stroke: 0.5mm
- Switch Life: 50,000 Cycles

Pad Layout

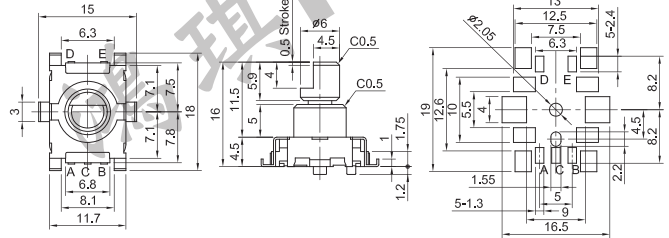


WITH CLICK & PUSH

EVR011SS-015 30 Position

- Rating: DC5V 10mA
- Detent Position and Angle: 30 Position (12°)
- Detent Torque: 100±70gf · cm
- Rotation Life: 10,000 Cycles
- Switch Rating: DC16V 5A
- Switch Force: 400±150gf
- Switch Stroke: 0.5mm
- Switch Life: 50,000 Cycles

Pad Layout

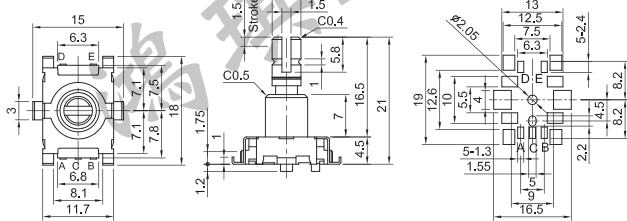


WITH CLICK & PUSH

EVR011SS-016 30 Position

- Rating: DC5V 10mA
- Detent Position and Angle: 30 Position (12°)
- Detent Torque: 100±70gf · cm
- Rotation Torque: 100±70gf · cm
- Rotation Life: 10,000 Cycles
- Switch Rating: DC16V 500mA
- Switch Force: 500±150gf
- Switch Stroke: 1.5mm
- Switch Life: 20,000 Cycles

Pad Layout

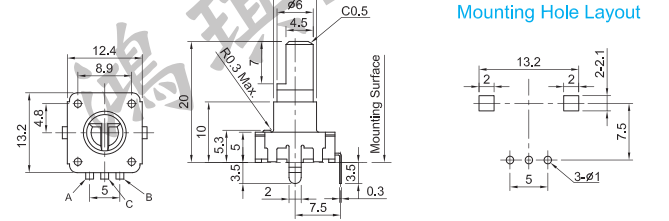


WITH CLICK

EVR113V-020 24 Position

- Rating: DC5V 0.5mA (Terminals A and B)
DC5V 1mA (Terminal C)
- Total Rotation Angle: 360° (Endless)
- Detent Position and Angle: 24 Position (15°)
- Rotation Torque: 30.6~204gf · cm
- Rotation Life: 30,000 Cycles
- Knob Color: Transparent

Mounting Hole Layout

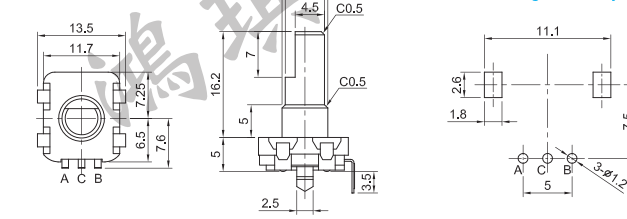


WITH CLICK

EVR011H-016 30 Position

- Rating: DC5V 10mA
- Detent Position and Angle: 30 Position (12°)
- Detent Torque: 120±70gf · cm
- Rotation Torque: 51gf · cm
- Rotation Life: 15,000 Cycles

Mounting Hole Layout

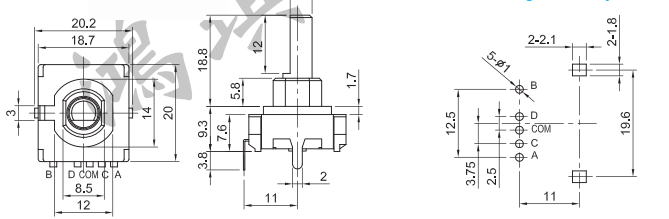


WITH CLICK

EVR011H-018 16 Position

- Rating: DC10V 1mA
- Rotation Angle: 360° (Endless)
- Detent Position and Angle: 16 Position (22.5°)
- Rotation Torque: 230±70gf · cm
- Rotation Life: 30,000 Cycles

Mounting Hole Layout

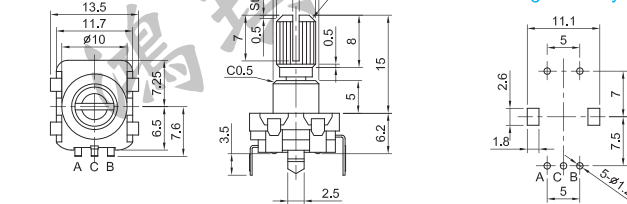


WITH CLICK & PUSH

EVR011VS-015A 30 Position

- Rating: DC5V 10mA
- Detent Position and Angle: 30 Position (12°)
- Detent Torque: 120±70gf · cm
- Rotation Torque: 51gf · cm
- Rotation Life: 15,000 Cycles
- Switch Rating: DC16V 3A
- Switch Force: 600±300gf
- Switch Stroke: 0.5mm
- Switch Life: 10,000 Cycles

Mounting Hole Layout



WITH CLICK & PUSH

EVR011VS-015B 30 Position

- Rating: DC5V 10mA
- Detent Position and Angle: 30 Position (12°)
- Detent Torque: 120±70gf · cm
- Rotation Torque: 51gf · cm
- Rotation Life: 15,000 Cycles
- Switch Rating: DC16V 3A
- Switch Force: 600±300gf
- Switch Stroke: 0.5mm
- Switch Life: 10,000 Cycles

Mounting Hole Layout

