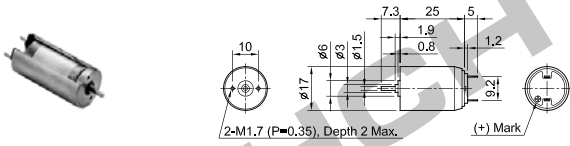


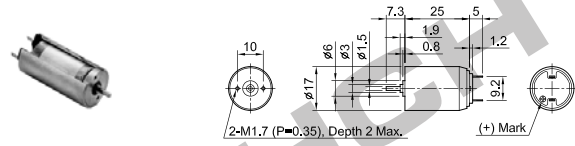
# CORELESS MOTORS

## CRS1751 (ø17X26.2mm)



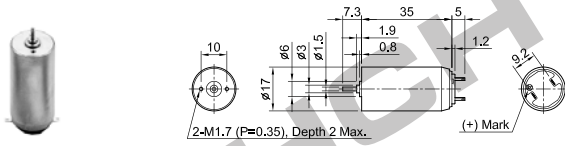
| Part No.                           | CRS1751 | CRS1752 | CRS1753 | CRS1754 |
|------------------------------------|---------|---------|---------|---------|
| Rated Voltage (V)                  | 6       | 6       | 6       | 12      |
| Rated Output (W)                   | 1.82    | 1.28    | 0.947   | 1.87    |
| Rated Torque (mNm)                 | 2       | 1.7     | 1.5     | 2       |
| Rated Speed (min <sup>-1</sup> )   | 8,700   | 7,200   | 6,030   | 8,950   |
| Rated Current (mA)                 | 383     | 265     | 196     | 194     |
| No-load Speed (min <sup>-1</sup> ) | 10,400  | 8,520   | 7,130   | 10,400  |
| No-load Current (mA)               | 12.3    | 9       | 8       | 8.2     |
| Starting Torque (mNm)              | 12.4    | 11      | 9.71    | 14      |
| Starting Current (mA)              | 2,310   | 1,660   | 1,220   | 1,310   |
| Direction of Rotation              | CW      |         |         |         |
| No of Commutator Segments          | 5       |         |         |         |
| Weight (g)                         | 30      |         |         |         |

## CRS1755 (ø17X26.2mm)



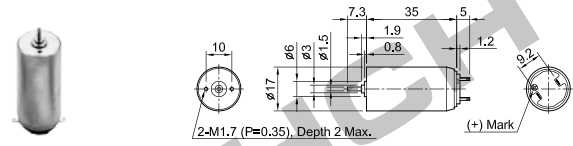
| Part No.                           | CRS1755 | CRS1756 | CRS1757 | CRS1758 |
|------------------------------------|---------|---------|---------|---------|
| Rated Voltage (V)                  | 12      | 12      | 24      | 24      |
| Rated Output (W)                   | 1.52    | 1.09    | 2.06    | 1.49    |
| Rated Torque (mNm)                 | 2       | 1.8     | 2       | 2       |
| Rated Speed (min <sup>-1</sup> )   | 7,250   | 5,810   | 9,840   | 7,090   |
| Rated Current (mA)                 | 160     | 117     | 105     | 78.5    |
| No-load Speed (min <sup>-1</sup> ) | 8,810   | 7,140   | 11,400  | 8,550   |
| No-load Current (mA)               | 4.7     | 4.2     | 3.5     | 2.5     |
| Starting Torque (mNm)              | 11.3    | 9.66    | 14.9    | 11.7    |
| Starting Current (mA)              | 877     | 610     | 756     | 448     |
| Direction of Rotation              | CW      |         |         |         |
| No of Commutator Segments          | 5       |         |         |         |
| Weight (g)                         | 30      |         |         |         |

## CRS1781 (ø17X36.2mm)



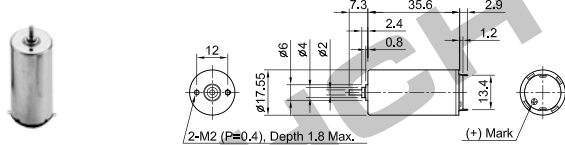
| Part No.                           | CRS1781 | CRS1782 | CRS1783 | CRS1784 |
|------------------------------------|---------|---------|---------|---------|
| Rated Voltage (V)                  | 6       | 6       | 12      | 12      |
| Rated Output (W)                   | 1.11    | 0.833   | 2.74    | 2.58    |
| Rated Torque (mNm)                 | 2.9     | 2.5     | 3       | 4.3     |
| Rated Speed (min <sup>-1</sup> )   | 3,700   | 3,200   | 8,720   | 5,700   |
| Rated Current (mA)                 | 269     | 200     | 281     | 294     |
| No-load Speed (min <sup>-1</sup> ) | 4,900   | 4,100   | 9,870   | 7,300   |
| No-load Current (mA)               | 21      | 17.7    | 19.7    | 16.4    |
| Starting Torque (mNm)              | 11.9    | 11.1    | 25.8    | 20.1    |
| Starting Current (mA)              | 1,040   | 827     | 2,270   | 1,310   |
| Direction of Rotation              | CW      |         |         |         |
| No of Commutator Segments          | 5       |         |         |         |
| Weight (g)                         | 41.4    |         |         |         |

## CRS1785 (ø17X36.2mm)



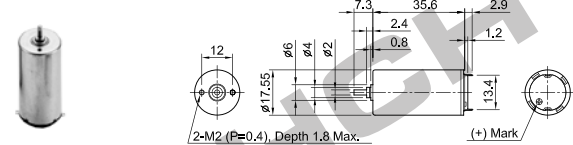
| Part No.                           | CRS1785 | CRS1786 | CRS1787 | CRS1788 |
|------------------------------------|---------|---------|---------|---------|
| Rated Voltage (V)                  | 12      | 24      | 24      | 24      |
| Rated Output (W)                   | 1.9     | 2.89    | 2.58    | 4.34    |
| Rated Torque (mNm)                 | 3.9     | 3.92    | 4.4     | 4       |
| Rated Speed (min <sup>-1</sup> )   | 4,700   | 6,900   | 5,600   | 10,400  |
| Rated Current (mA)                 | 219     | 154     | 144     | 229     |
| No-load Speed (min <sup>-1</sup> ) | 6,000   | 8,500   | 7,000   | 11,500  |
| No-load Current (mA)               | 15      | 7.6     | 8.5     | 24.7    |
| Starting Torque (mNm)              | 17.9    | 22.7    | 22.3    | 39.2    |
| Starting Current (mA)              | 951     | 855     | 692     | 2,020   |
| Direction of Rotation              | CW      |         |         |         |
| No of Commutator Segments          | 5       |         |         |         |
| Weight (g)                         | 41.4    |         |         |         |

## CRS1881 (ø17.55X36.8mm)



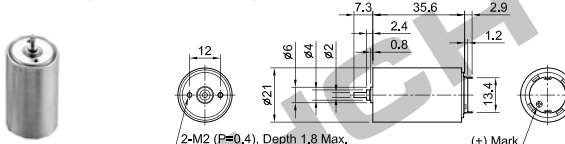
| Part No.                           | CRS1881 | CRS1882 | CRS1883 | CRS1884 |
|------------------------------------|---------|---------|---------|---------|
| Rated Voltage (V)                  | 6       | 12      | 12      | 12      |
| Rated Output (W)                   | 1.93    | 2.7     | 2.22    | 0.933   |
| Rated Torque (mNm)                 | 2.94    | 2.94    | 2.94    | 3.92    |
| Rated Speed (min <sup>-1</sup> )   | 6,260   | 8,780   | 7,210   | 2,270   |
| Rated Current (mA)                 | 492     | 271     | 234     | 111     |
| No-load Speed (min <sup>-1</sup> ) | 8,190   | 9,890   | 8,450   | 3,070   |
| No-load Current (mA)               | 50      | 20.5    | 16      | 5.3     |
| Starting Torque (mNm)              | 12.5    | 26.2    | 20      | 15.1    |
| Starting Current (mA)              | 1,940   | 2,260   | 1,450   | 411     |
| Direction of Rotation              | CW      |         |         |         |
| No of Commutator Segments          | 5       |         |         |         |
| Weight (g)                         | 42.8    |         |         |         |

## CRS1885 (ø17.55X36.8mm)



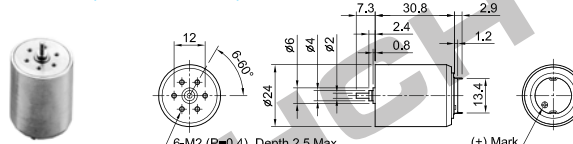
| Part No.                           | CRS1885 | CRS1886 | CRS1887 | CRS1888 |
|------------------------------------|---------|---------|---------|---------|
| Rated Voltage (V)                  | 12      | 24      | 24      | 24      |
| Rated Output (W)                   | 4.31    | 2.82    | 1.42    | 5       |
| Rated Torque (mNm)                 | 4.9     | 2.94    | 3.92    | 5.88    |
| Rated Speed (min <sup>-1</sup> )   | 8,400   | 9,150   | 3,460   | 8,120   |
| Rated Current (mA)                 | 457     | 152     | 83.6    | 258     |
| No-load Speed (min <sup>-1</sup> ) | 10,200  | 11,300  | 4,680   | 9,640   |
| No-load Current (mA)               | 23.5    | 12.7    | 3.1     | 9.4     |
| Starting Torque (mNm)              | 28.5    | 15.5    | 15      | 37.3    |
| Starting Current (mA)              | 2,550   | 745     | 311     | 1,580   |
| Direction of Rotation              | CW      |         |         |         |
| No of Commutator Segments          | 5       |         |         |         |
| Weight (g)                         | 42.8    |         |         |         |

## CRS2181 (ø21X36.2mm)



| Part No.                           | CRS2181 | CRS2182 | CRS2186 | CRS2187 |
|------------------------------------|---------|---------|---------|---------|
| Rated Voltage (V)                  | 6       | 12      | 24      | 24      |
| Rated Output (W)                   | 2.1     | 3.26    | 3       | 1.46    |
| Rated Torque (mNm)                 | 3.92    | 4.41    | 3.92    | 4.9     |
| Rated Speed (min <sup>-1</sup> )   | 5,120   | 7,060   | 7,320   | 2,840   |
| Rated Current (mA)                 | 534     | 336     | 175     | 87.7    |
| No-load Speed (min <sup>-1</sup> ) | 6,770   | 8,210   | 9,400   | 3,850   |
| No-load Current (mA)               | 44.5    | 18.8    | 11.3    | 4.2     |
| Starting Torque (mNm)              | 16.1    | 31.6    | 17.7    | 18.7    |
| Starting Current (mA)              | 2,060   | 2,300   | 749     | 322     |
| Direction of Rotation              | CW      |         |         |         |
| No of Commutator Segments          | 5       |         |         |         |
| Weight (g)                         | 68.5    |         |         |         |

## CRS2471 (ø24X32mm)



| Part No.                           | CRS2471 | CRS2472 | CRS2473 | CRS2474 |
|------------------------------------|---------|---------|---------|---------|
| Rated Voltage (V)                  | 9       | 12      | 18      | 24      |
| Rated Output (W)                   | 5.12    | 5.91    | 8.43    | 10.2    |
| Rated Torque (mNm)                 | 5.88    | 6.86    | 9.81    | 12.8    |
| Rated Speed (min <sup>-1</sup> )   | 8,320   | 8,225   | 8,210   | 7,630   |
| Rated Current (mA)                 | 710     | 611     | 595     | 560     |
| No-load Speed (min <sup>-1</sup> ) | 9,650   | 9,671   | 10,060  | 9,630   |
| No-load Current (mA)               | 40      | 25.6    | 18.3    | 21      |
| Starting Torque (mNm)              | 42.9    | 45.9    | 53.2    | 61.6    |
| Starting Current (mA)              | 4,930   | 3,940   | 3,150   | 2,620   |
| Direction of Rotation              | CW      |         |         |         |
| No of Commutator Segments          | 5       |         |         |         |
| Weight (g)                         | 78.8    |         |         |         |