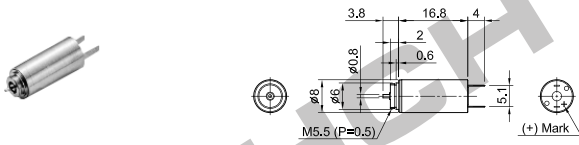


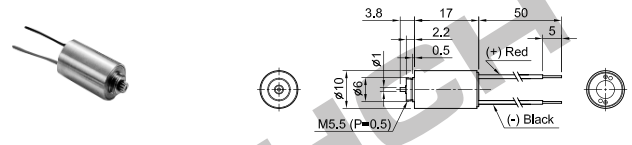
CORELESS MOTORS

CRS0811 (ø8X16.8mm)



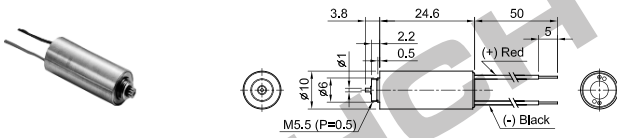
Part No.	CRS0811	CRS0812	CRS0813	CRS0814
Rated Voltage (V)	3	6	9	12
Rated Output (W)	0.21	0.17	0.2	0.21
Rated Torque (mNm)	0.15	0.15	0.15	0.15
Rated Speed (min ⁻¹)	13,600	11,100	13,000	13,500
Rated Current (mA)	110	50	40	30
No-load Speed (min ⁻¹)	16,000	13,500	15,500	16,000
No-load Current (mA)	25	14	8	6
Starting Torque (mNm)	0.97	0.83	0.93	0.93
Starting Current (mA)	578	213	179	138
Direction of Rotation	CW			
No of Commutator Segments	5			
Weight (g)	4.5			

CRS1011 (ø10X17mm)



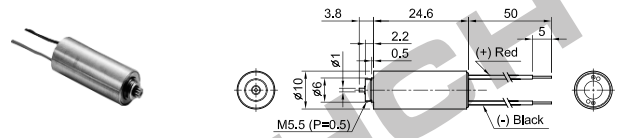
Part No.	CRS1011	CRS1012	CRS1013	CRS1014
Rated Voltage (V)	2.4	3	3.6	6
Rated Output (W)	0.165	0.173	0.16	0.257
Rated Torque (mNm)	0.177	0.186	0.177	0.216
Rated Speed (min ⁻¹)	8,910	8,870	8,680	11,400
Rated Current (mA)	96.8	77	63.6	60.4
No-load Speed (min ⁻¹)	10,600	10,800	10,600	13,800
No-load Current (mA)	14.9	10.5	9.1	11.2
Starting Torque (mNm)	1.1	1.06	0.96	1.21
Starting Current (mA)	517	382	298	282
Direction of Rotation	CW			
No of Commutator Segments	5			
Weight (g)	7.4			

CRS1041 (ø10X24.6mm)



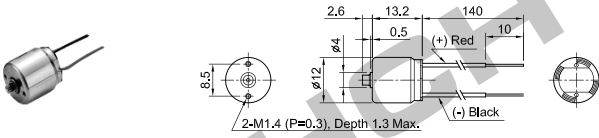
Part No.	CRS1041	CRS1042	CRS1043	CRS1044
Rated Voltage (V)	3	3	4.5	4.5
Rated Output (W)	0.53	0.461	0.658	0.524
Rated Torque (mNm)	0.49	0.451	0.52	0.51
Rated Speed (min ⁻¹)	10,400	9,750	12,100	9,800
Rated Current (mA)	224	195	184	154
No-load Speed (min ⁻¹)	13,200	11,700	14,100	11,700
No-load Current (mA)	19.2	13.2	14.7	14.9
Starting Torque (mNm)	2.28	2.75	3.6	3.12
Starting Current (mA)	973	1,130	1,190	861
Direction of Rotation	CW			
No of Commutator Segments	5			
Weight (g)	10.7			

CRS1045 (ø10X24.6mm)



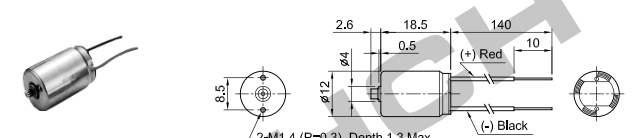
Part No.	CRS1045	CRS1046	CRS1047	CRS1048
Rated Voltage (V)	6	6	9	12
Rated Output (W)	0.597	0.407	0.596	0.636
Rated Torque (mNm)	0.588	0.49	0.569	0.589
Rated Speed (min ⁻¹)	9,700	7,950	10,000	10,700
Rated Current (mA)	130	90.4	84.7	67.5
No-load Speed (min ⁻¹)	11,900	9,800	12,200	13,100
No-load Current (mA)	10.4	8.6	5.1	4.6
Starting Torque (mNm)	3.12	2.56	3.13	3.13
Starting Current (mA)	641	436	442	349
Direction of Rotation	CW			
No of Commutator Segments	5			
Weight (g)	10.7			

CRS1201 (ø12X13.2mm)



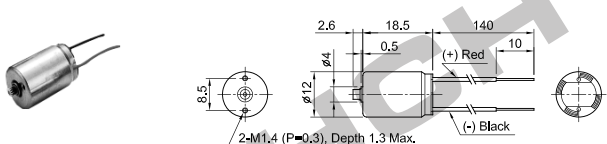
Part No.	CRS1201	CRS1202	CRS1203	CRS1204
Rated Voltage (V)	1.2	1.5	3	3
Rated Output (W)	0.046	0.036	0.043	0.116
Rated Torque (mNm)	0.049	0.049	0.059	0.098
Rated Speed (min ⁻¹)	9,030	6,970	6,990	11,300
Rated Current (mA)	70.5	37.2	25.9	66
No-load Speed (min ⁻¹)	10,800	7,660	8,260	13,300
No-load Current (mA)	31.7	13.8	10.1	22.1
Starting Torque (mNm)	0.307	0.546	0.385	0.66
Starting Current (mA)	276	274	113	315
Direction of Rotation	CW			
No of Commutator Segments	5			
Weight (g)	7			

CRS1221 (ø12X18.5mm)



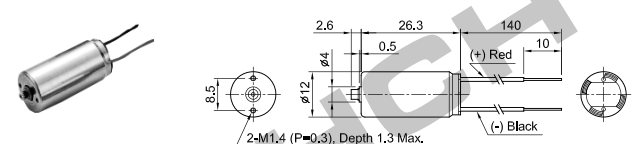
Part No.	CRS1221	CRS1222	CRS1223	CRS1224
Rated Voltage (V)	3	3	4.5	4.5
Rated Output (W)	0.098	0.173	0.217	0.347
Rated Torque (mNm)	0.157	0.196	0.29	0.441
Rated Speed (min ⁻¹)	5,970	8,440	7,110	7,520
Rated Current (mA)	45	83.4	67.2	108
No-load Speed (min ⁻¹)	6,710	10,400	8,740	9,700
No-load Current (mA)	8.3	13.6	9.1	8.7
Starting Torque (mNm)	1.43	1.04	1.58	1.96
Starting Current (mA)	341	386	326	457
Direction of Rotation	CW			
No of Commutator Segments	5			
Weight (g)	10.4			

CRS1225 (ø12X18.5mm)



Part No.	CRS1225	CRS1226	CRS1227	CRS1228
Rated Voltage (V)	6	12	12	12
Rated Output (W)	0.156	0.186	0.295	0.353
Rated Torque (mNm)	0.196	0.245	0.245	0.245
Rated Speed (min ⁻¹)	7,620	7,240	11,500	13,700
Rated Current (mA)	33.4	20.7	40	42.1
No-load Speed (min ⁻¹)	8,990	8,480	13,600	16,300
No-load Current (mA)	4.4	3	5.2	7.4
Starting Torque (mNm)	1.3	1.67	1.6	1.57
Starting Current (mA)	196	124	193	225
Direction of Rotation	CW			
No of Commutator Segments	5			
Weight (g)	10.4			

CRS1251 (ø12X26.3mm)



Part No.	CRS1251	CRS1252	CRS1253	CRS1254
Rated Voltage (V)	6	6	12	12
Rated Output (W)	0.181	0.209	0.165	0.965
Rated Torque (mNm)	0.392	0.294	0.157	0.785
Rated Speed (min ⁻¹)	4,410	6,800	10,100	11,700
Rated Current (mA)	38.9	46.2	17	99.4
No-load Speed (min ⁻¹)	5,350	7,580	10,600	13,700
No-load Current (mA)	2.6	6.7	2.9	5.7
Starting Torque (mNm)	2.23	2.83	3.31	5.56
Starting Current (mA)	209	387	301	669
Direction of Rotation	CW			
No of Commutator Segments	5			
Weight (g)	15.4			