

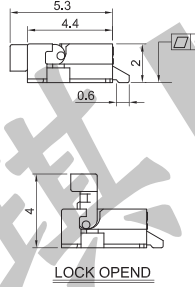
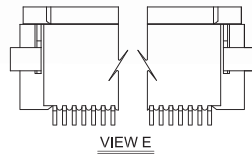
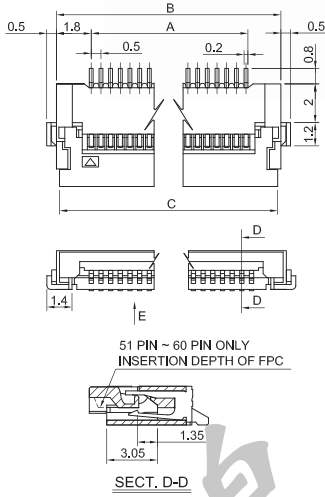
# FPC • FFC CONNECTOR

## PITCH:0.5mm H:2.0mm

### ZIF TYPE

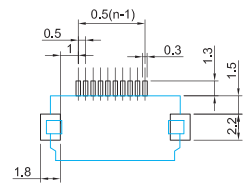
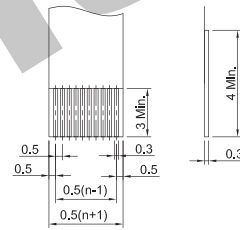
# FPC3 SERIES

- Rating: AC/DC50V 500mA
- Contact Resistance: 30mΩ Max.
- Insulation Resistance: 100Ω Min. at DC250V
- Dielectric Strength: AC250V for 1 Minute
- Pitch: 0.5mm
- Height: 2.0mm
- No. of Poles: 6~60 Poles
- Operating Temperature: -40 ~ +85°C
- Package: 2,000 Pcs/Reel



FPC • FFC Dimensions

Pad Layout



PARTS NO.	PIN	A	B	C	PARTS NO.	PIN	A	B	C	PARTS NO.	PIN	A	B	C	PARTS NO.	PIN	A	B	C	PARTS NO.	PIN	A	B	C
FPC3-06	6	2.5	6.1	5.7	FPC3-17	17	8.0	11.6	11.2	FPC3-28	28	13.5	17.1	16.7	FPC3-39	39	19.0	22.6	22.2	FPC3-50	50	24.5	28.1	27.7
FPC3-07	7	3.0	6.6	6.2	FPC3-18	18	8.5	12.1	11.7	FPC3-29	29	14.0	17.6	17.2	FPC3-40	40	19.5	23.1	22.7	FPC3-51	51	25.0	28.6	28.2
FPC3-08	8	3.5	7.1	6.7	FPC3-19	19	9.0	12.6	12.2	FPC3-30	30	14.5	18.1	17.7	FPC3-41	41	20.0	23.6	23.2	FPC3-52	52	25.5	29.1	28.7
FPC3-09	9	4.0	7.6	7.2	FPC3-20	20	9.5	13.1	12.7	FPC3-31	31	15.0	18.6	18.2	FPC3-42	42	20.5	24.1	23.7	FPC3-53	53	26.0	29.6	29.2
FPC3-10	10	4.5	8.1	7.7	FPC3-21	21	10.0	13.6	13.2	FPC3-32	32	15.5	19.1	18.7	FPC3-43	43	21.0	24.6	24.2	FPC3-54	54	26.5	30.1	29.7
FPC3-11	11	5.0	8.6	8.2	FPC3-22	22	10.5	14.1	13.7	FPC3-33	33	16.0	19.6	19.2	FPC3-44	44	21.5	25.1	24.7	FPC3-55	55	27.0	30.6	30.2
FPC3-12	12	5.5	9.1	8.7	FPC3-23	23	11.0	14.6	14.2	FPC3-34	34	16.5	20.1	19.7	FPC3-45	45	22.0	25.6	25.2	FPC3-56	56	27.5	31.1	30.7
FPC3-13	13	6.0	9.6	9.2	FPC3-24	24	11.5	15.1	14.7	FPC3-35	35	17.0	20.6	20.2	FPC3-46	46	22.5	26.1	25.7	FPC3-57	57	28.0	31.6	31.2
FPC3-14	14	6.5	10.1	9.7	FPC3-25	25	12.0	15.6	15.2	FPC3-36	36	17.5	21.1	20.7	FPC3-47	47	23.0	26.6	26.2	FPC3-58	58	28.5	32.1	31.7
FPC3-15	15	7.0	10.6	10.2	FPC3-26	26	12.5	16.1	15.7	FPC3-37	37	18.0	21.6	21.2	FPC3-48	48	23.5	27.1	26.7	FPC3-59	59	29.0	32.6	32.2
FPC3-16	16	7.5	11.1	10.7	FPC3-27	27	13.0	16.6	16.2	FPC3-38	38	18.5	22.1	21.7	FPC3-49	49	24.0	27.6	27.2	FPC3-60	60	29.5	33.1	32.7

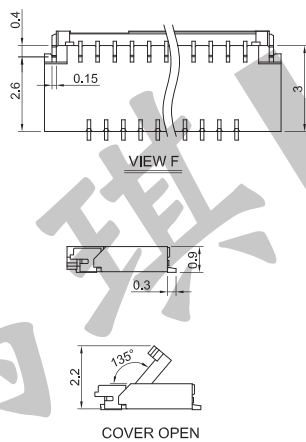
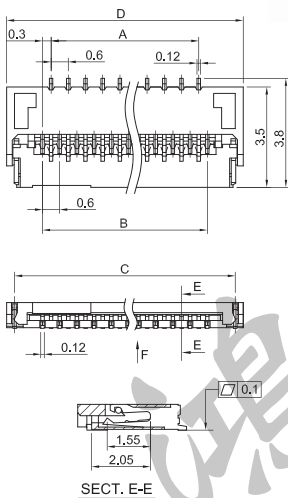
# FPC • FFC CONNECTOR

## PITCH:0.3mm H:1.0mm

### ZIF TYPE

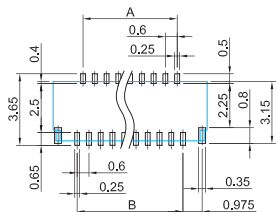
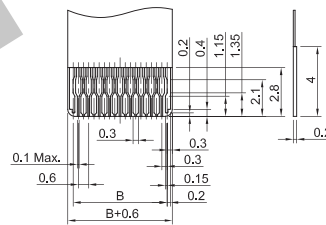
# FPC4 SERIES

- Rating: AC/DC50V 200mA
- Dielectric Strength: AC250V for 1 Minute
- Pitch: 0.3mm
- Height: 1.0mm
- No. of Poles: 9~51 Poles
- Applicable FPC/FFC Thickness: 0.2±0.03mm
- Operating Temperature: -40 ~ +85°C
- Package: 5,000 Pcs/Reel



FPC • FFC Dimensions

Pad Layout



PARTS NO.	PIN	A	B	C	D	PARTS NO.	PIN	A	B	C	D	PARTS NO.	PIN	A	B	C	D	PARTS NO.	PIN	A	B	C	D
FPC4-09	9	1.8	2.4	4.35	4.9	FPC4-21	21	5.4	6.0	7.95	8.5	FPC4-33	33	9.0	9.6	11.55	12.1	FPC4-45	45	12.6	13.2	15.15	15.7
FPC4-11	11	2.4	3.0	4.95	5.5	FPC4-23	23	6.0	6.6	8.55	9.1	FPC4-35	35	9.6	10.2	12.15	12.7	FPC4-47	47	13.2	13.8	15.75	16.3
FPC4-13	13	3.0	3.6	5.55	6.1	FPC4-25	25	6.6	7.2	9.15	9.7	FPC4-37	37	10.2	10.8	12.75	13.3	FPC4-49	49	13.8	14.4	16.35	16.9
FPC4-15	15	3.6	4.2	6.15	6.7	FPC4-27	27	7.2	7.8	9.75	10.3	FPC4-39	39	10.8	11.4	13.35	13.9	FPC4-51	51	14.4	15.0	16.95	17.5
FPC4-17	17	4.2	4.8	6.75	7.3	FPC4-29	29	7.8	8.4	10.35	10.9	FPC4-41	41	11.4	12.0	13.95	14.5						
FPC4-19	19	4.8	5.4	7.35	7.9	FPC4-31	31	8.4	9.0	10.95	11.5	FPC4-43	43	12.0	12.6	14.55	15.1						