

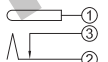
# DC POWER JACKS

## PJK-122A CENTER PIN : $\phi 1.3$

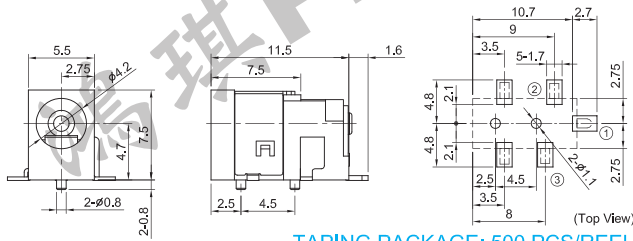
- Rating: DC16V 3.5A
- Force: 0.3~3.0Kgf
- Life: 5,000 Cycles



Circuit



Pad Layout



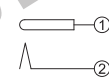
TAPING PACKAGE: 500 PCS/REEL

## PJK-125A CENTER PIN : $\phi 0.65$

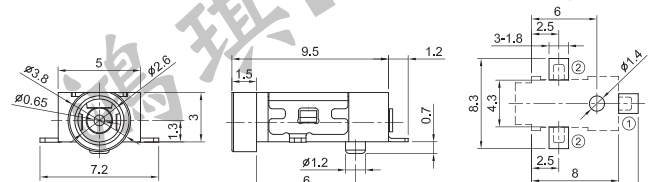
- Rating: DC6V 2A
- Force: 0.3~3.0kgf
- Life: 5,000 Cycles



Circuit



Pad Layout



TAPING PACKAGE: 1,200 PCS/REEL

## PJK-126 CENTER PIN : $\phi 0.65$

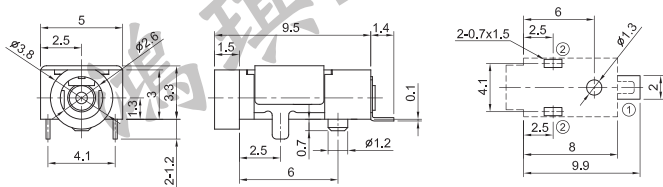
- Rating: DC16V 1A Max.
- Force: 0.3~3.0Kgf
- Life: 5,000 Cycles



Circuit



Pad Layout



TAPING PACKAGE: 1,200 PCS/REEL

## EARPHONE JACK PJK-420 $\phi 3.6$ (3 POLES)

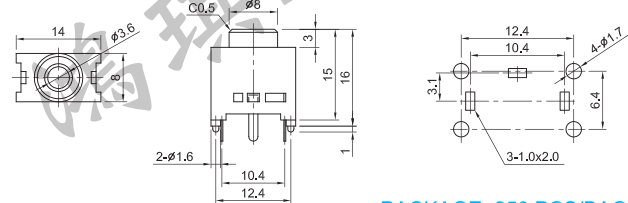
- Rating: DC12V 1A
- Force: 0.4~3.0kgf
- Life: 5,000 Cycles



Circuit



Mounting Hole Layout

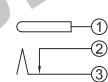


PACKAGE: 250 PCS/BAG

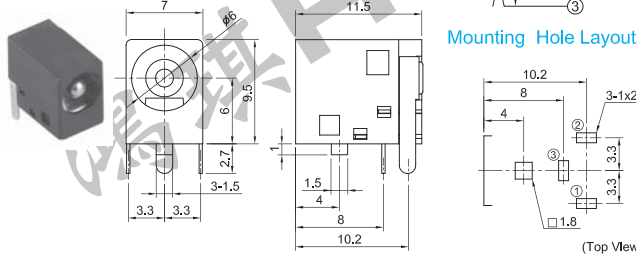
### REFLOW TYPE

- Rating: DC16V 5A Max.
  - Force: 0.3~3.0kgf
  - Life: 5,000 Cycles
- IDJ-D40** CENTER PIN :  $\phi 1.65$   
**IDJ-D41** CENTER PIN :  $\phi 2.00$   
**IDJ-D43** CENTER PIN :  $\phi 2.50$

Circuit



Mounting Hole Layout

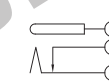


TAPING PACKAGE: 430 PCS/REEL

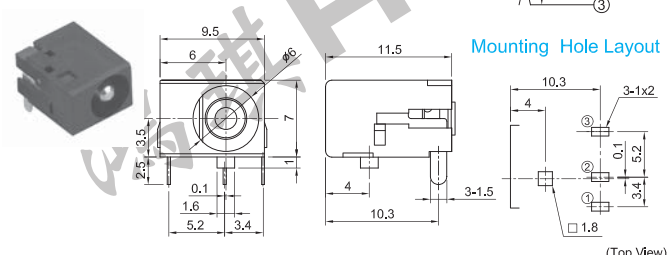
### REFLOW TYPE

- Rating: DC16V 5A Max.
  - Force: 0.3~3.0kgf
  - Life: 5,000 Cycles
- IDJ-D46** CENTER PIN :  $\phi 1.65$   
**IDJ-D47** CENTER PIN :  $\phi 2.00$   
**IDJ-D49** CENTER PIN :  $\phi 2.50$

Circuit



Mounting Hole Layout

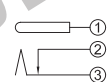


TAPING PACKAGE: 350 PCS/REEL

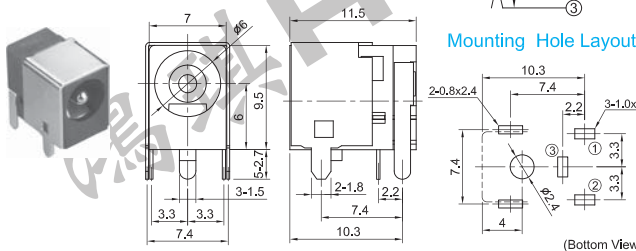
### REFLOW TYPE (WITH BRACKET)

- Rating: DC16V 5A Max.
  - Force: 0.3~3.0kgf
  - Life: 5,000 Cycles
- IDJ-D40B2** CENTER PIN :  $\phi 1.65$   
**IDJ-D41B2** CENTER PIN :  $\phi 2.00$   
**IDJ-D43B2** CENTER PIN :  $\phi 2.50$

Circuit



Mounting Hole Layout

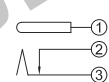


TAPING PACKAGE: 430 PCS/REEL

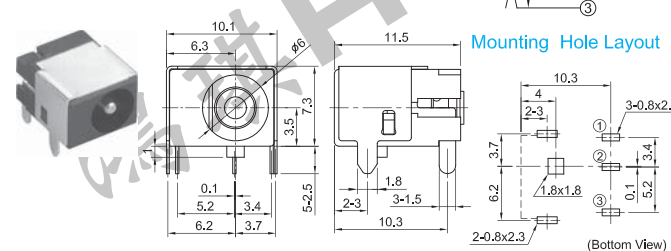
### REFLOW TYPE (WITH BRACKET)

- Rating: DC16V 5A Max.
  - Force: 0.3~3.0kgf
  - Life: 5,000 Cycles
- IDJ-D46B2** CENTER PIN :  $\phi 1.65$   
**IDJ-D47B2** CENTER PIN :  $\phi 2.00$   
**IDJ-D49B2** CENTER PIN :  $\phi 2.50$

Circuit



Mounting Hole Layout



TAPING PACKAGE: 300 PCS/REEL