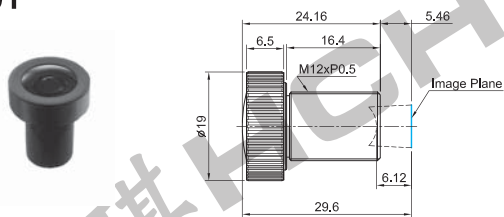


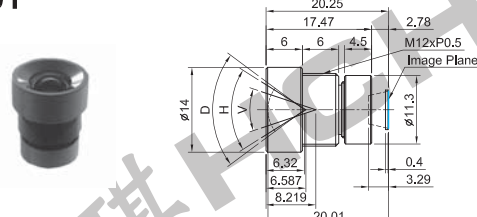
# LENSES

## AUTOMOTIVE LENS LEN201



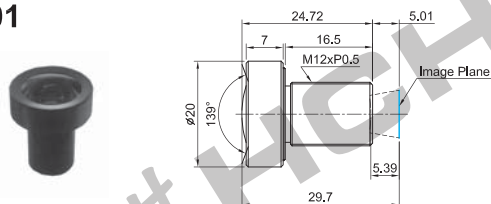
Entrance Pupil Diameter	φ2.31	Exit Pupil Diameter	φ12.15
Entrance Pupil Position	4.31	Exit Pupil Position	-13.57
Focal Length	3.74±5%	Back Focal Length	6.12±5% In Air
F - Number	1.6	Mechanical BFL	5.46±0.3 in Air
Operation	Iris Fixed	Sensor Size	1/2"
	Focus 40cm ~ ∞	Dimensions	φ19.0 x 24.16
Angle of View	D	132°	Remarks 5.0Mega Pixel IR CUT: 0.21t, Cover Glass 0.5t
	H	99°	
	V	78°	
Sensor Size	6.144 x 4.915(D:7.868)		

## AUTOMOTIVE LENS LEN301



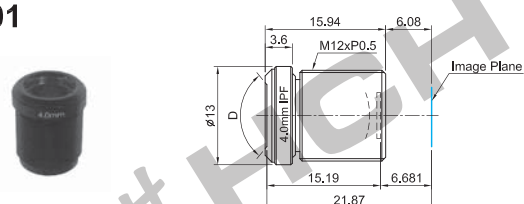
Entrance Pupil Diameter	φ2.43	Exit Pupil Diameter	φ5.06
Entrance Pupil Position	4.17	Exit Pupil Position	-7.19
Focal Length	5.0	Back Focal Length	3.29±5% with C/G
F - Number	2.0	Mechanical BFL	3.78±0.3 with C/G
Operation	Iris Fixed	Sensor Size	1/2.7" CMOS
	Focus 40cm ~ ∞	Dimensions	φ14.0 x 17.47
Angle of View	D	73°	Remarks IR CUT FILTER: 0.21t, 650nm(T=50%) Cover Glass: 0.4t Waterproof: IP6K9K
	H	64.4°	
	V	37°	
Sensor Size	5.76 x 3.24(D:6.608)		

## SECURITY LENS LEN401



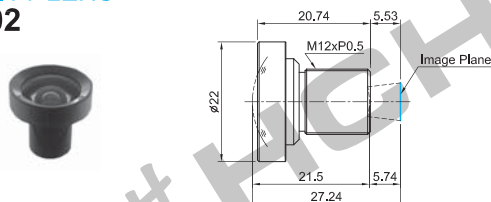
Entrance Pupil Diameter	φ2.17	Exit Pupil Diameter	φ8.03
Entrance Pupil Position	4.99	Exit Pupil Position	-14.80
Focal Length	4.0±5%	Back Focal Length	5.39±5% in Air
F - Number	1.8	Mechanical BFL	5.01±0.3 in Air
Operation	Iris Fixed	Sensor Size	—
	Focus 40cm ~ ∞	Dimensions	φ20.0 x 24.72
Angle of View	D	138°±5%	Remarks 4K LENS (IMX185), Cover Glass 0.5t, IR CUT-OFF FILTER: 0.3t
	H	118°±5%	
	V	49°±5%	
Sensor Size	7.578 x 3.996(D:8.567)		

## SECURITY LENS LEN501



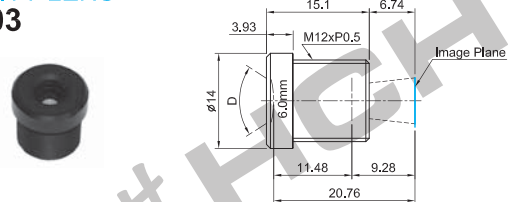
Entrance Pupil Diameter	φ1.87	Exit Pupil Diameter	φ8.7
Entrance Pupil Position	3.4	Exit Pupil Position	-17.6
Focal Length	4.0	Back Focal Length	6.681±5% in Air
F - Number	2.0	Mechanical BFL	6.08±0.3 in Air
Operation	Iris Fixed	Sensor Size	1/2.7" CMOS
	Focus 40cm ~ ∞	Dimensions	φ13.0 x 15.94
Angle of View	D	101°	Remarks 3.0Mega Pixel, Dual Pass Filter 0.4t 940nm
	H	86°	
	V	47°	
Sensor Size	5.76 x 3.24(D:6.609)		

## SECURITY LENS LEN502



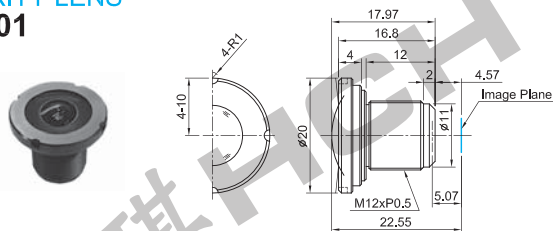
Entrance Pupil Diameter	φ2.05	Exit Pupil Diameter	φ8.18
Entrance Pupil Position	6.31	Exit Pupil Position	-16.6
Focal Length	4.3	Back Focal Length	5.74±5% in Air
F - Number	2.0	Mechanical BFL	5.53±0.3 in Air
Operation	Iris Fixed	Sensor Size	1/2.7"
	Focus 40cm ~ ∞	Dimensions	φ22.0 x 20.74
Angle of View	D	75°	Remarks 3.0Mega Pixel, IR CUT FILTER: 0.145t (650nm), Dummy: Air, Cover Glass 0.7t *TV Distortion: 0.4%
	H	68°	
	V	41°	
Sensor Size	5.76 x 3.24(D:6.609)		

## SECURITY LENS LEN503



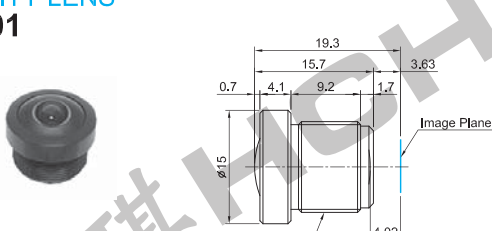
Entrance Pupil Diameter	φ2.81	Exit Pupil Diameter	φ9.05
Entrance Pupil Position	2.45	Exit Pupil Position	-10.02
Focal Length	6.0	Back Focal Length	9.28±5% in Air
F - Number	2.1	Mechanical BFL	6.74±0.3 in Air
Operation	Iris Fixed	Sensor Size	1/2.7" CMOS
	Focus 40cm ~ ∞	Dimensions	φ14.0 x 15.1
Angle of View	D	66°	Remarks 3.0Mega Pixel, Cover Glass 0.7t *ICR TYPE, IR CUT: 0.145t, 650nm(T=50%), Dummy: Air
	H	57°	
	V	31°	
Sensor Size	5.76 x 3.24(D:6.609)		

## SECURITY LENS LEN601



Entrance Pupil Diameter	φ1.2	Exit Pupil Diameter	φ7.11
Entrance Pupil Position	3.72	Exit Pupil Position	-9.74
Focal Length	2.5	Back Focal Length	5.07±5% in Air
F - Number	2.0	Mechanical BFL	4.57±0.3 in Air
Operation	Iris Fixed	Sensor Size	1/2.8" CMOS
	Focus 40cm ~ ∞	Dimensions	φ20.0 x 17.97
Angle of View	D	168°	Remarks 3.0Mega Pixel, OLPF: 0.7t, Cover Glass 0.7t
	H	125°	
	V	91°	
Sensor Size	5.76 x 3.24(D:6.608)		

## SECURITY LENS LEN701



Entrance Pupil Diameter	φ0.89	Exit Pupil Diameter	φ4.18
Entrance Pupil Position	3.28	Exit Pupil Position	-8.37
Focal Length	1.8±5%	Back Focal Length	4.02±5% in Air
F - Number	2.0±5%	Mechanical BFL	3.63±0.3 in Air
Operation	Iris Fixed	Sensor Size	1/4" CCD
	Focus 40cm ~ ∞	Dimensions	φ15.0 x 15.7
Angle of View	D	158°	Remarks Elements : 6Glass
	H	122°	
	V	89°	